



Translating GIS for All

Santa Clara County GIS Day 2023

Todd Schuble, GIS Director

Cook County Bureau of Technology, GIS Division











Floodplain Interactive Map















100 WEST PROJECT 500 SOUTH TO HWY 89/91



FREE RIGHT HAND TURN ONTO HIGHWAY 89/91
(SIMILAR TO 1000 WEST INTERSECTION WITH HIGHWAY)
PROJECT ENDS AT HWY 89/91

100 WEST

GOLF COURSE ROAD

PROJECT STARTS AT 500 SOUTH

NEW BRIDGE OVER LOGAN RIVER

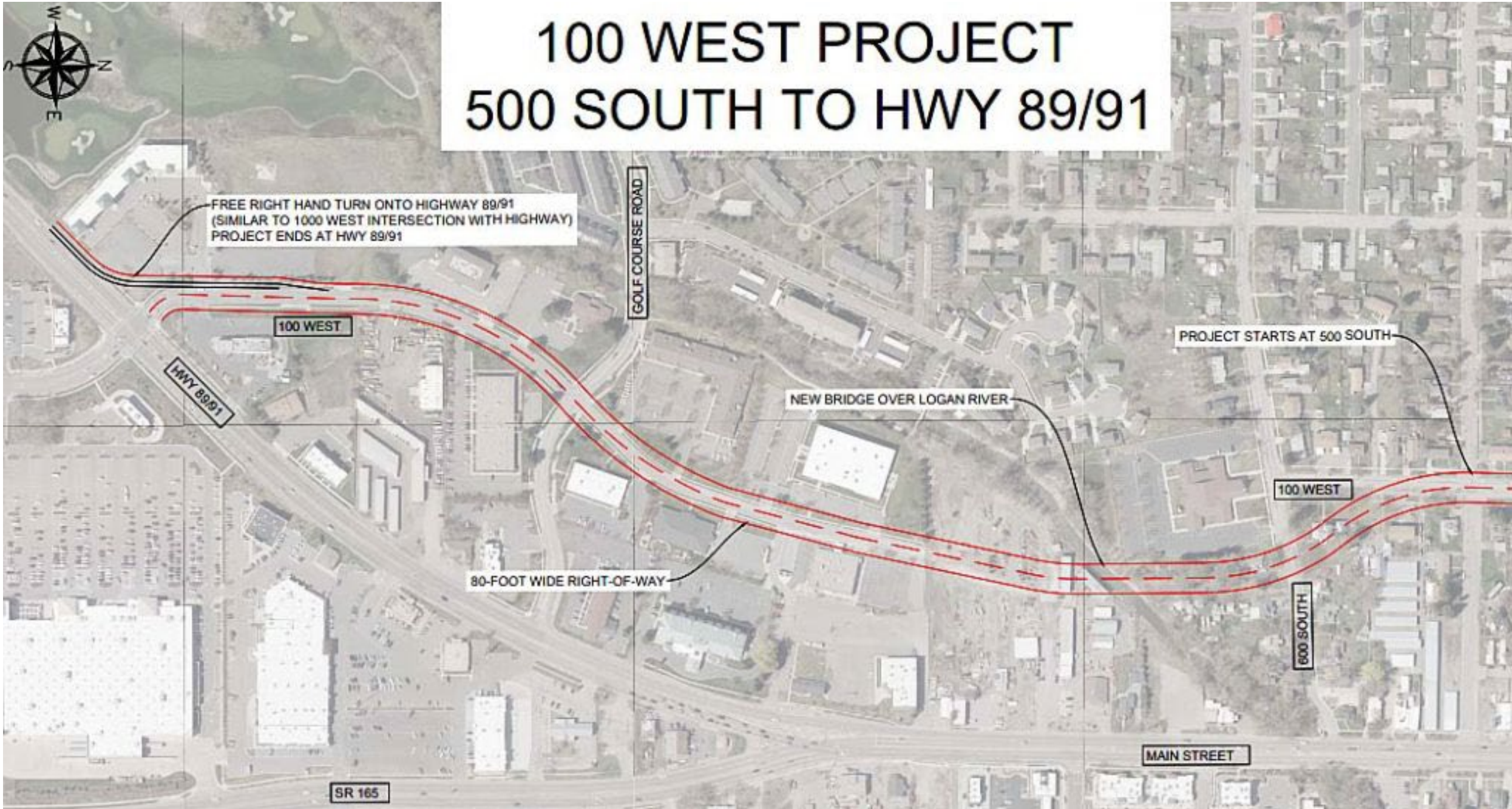
100 WEST

80-FOOT WIDE RIGHT-OF-WAY

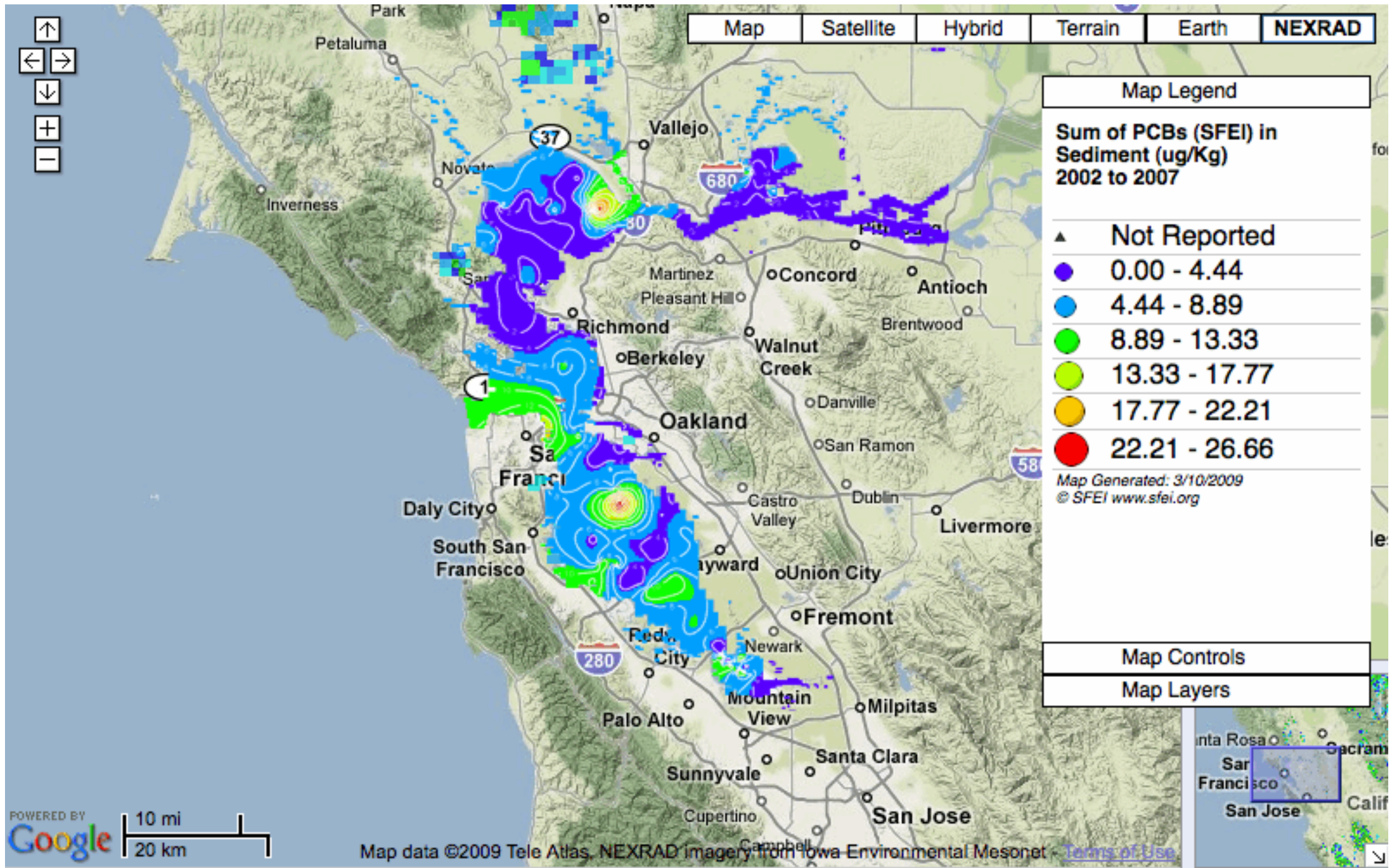
500 SOUTH

MAIN STREET

SR 165







Map Satellite Hybrid Terrain Earth **NEXRAD**

Map Legend

Sum of PCBs (SFEI) in Sediment (ug/Kg) 2002 to 2007

- ▲ Not Reported
- 0.00 - 4.44
- 4.44 - 8.89
- 8.89 - 13.33
- 13.33 - 17.77
- 17.77 - 22.21
- 22.21 - 26.66

Map Generated: 3/10/2009
© SFEI www.sfei.org

Map Controls

Map Layers

POWERED BY 10 mi / 20 km















Parcel Information

Parcel: 02-28-382-010

Alternate PIN	
Brief Legal	LOT 41 PRAIRIE PARK CITY OF YORKVILLE

Taxing Information

All taxing information comes from assessment records and a parcel's tax code

Tax Code	BR005
Property Class	0040
Township	Bristol Township
Municipality	CITY OF YORKVILLE
Drainage District	
SSA	

Property Area

CAMA Information

1 Story

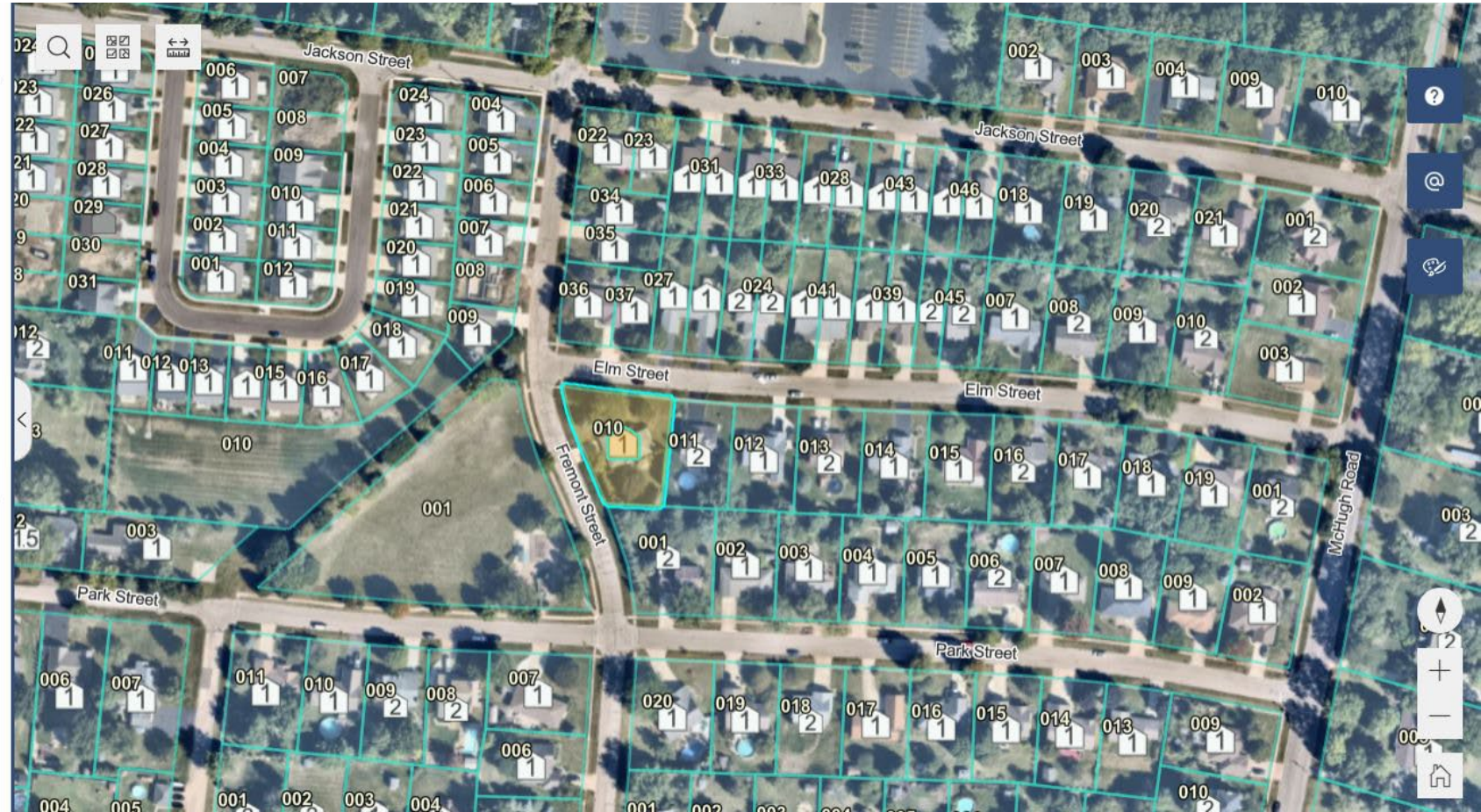
Structure Name	1.0 Story
Year Built	1993

Square Footage

Square Feet	1,630
Basement ft ²	1,630
Garage ft ²	484

Rooms

Total Rooms	5
Bedrooms	3
Full Baths	2
Half Baths	0

















File No.: 4965190

Location: Riverside County, CA

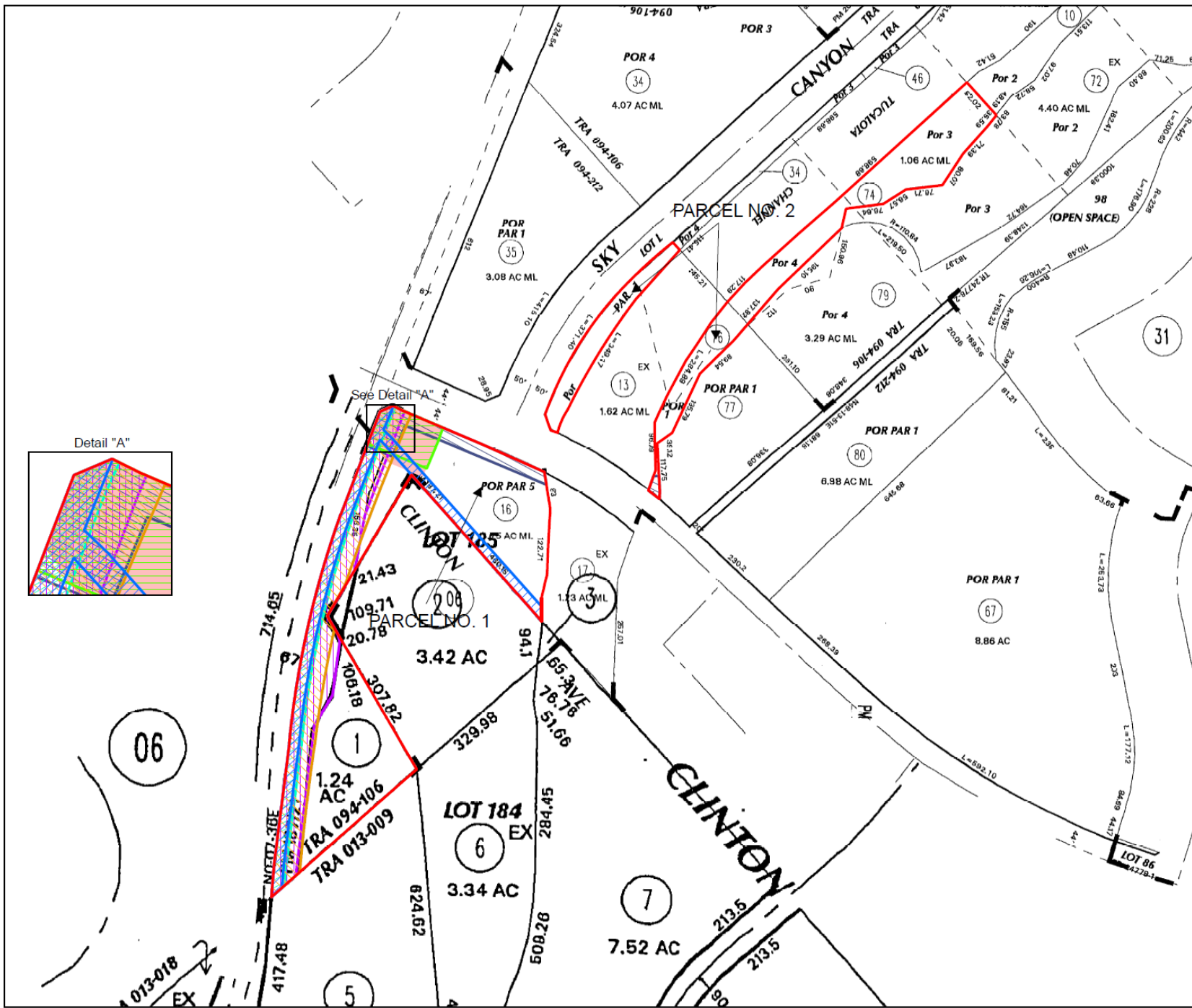
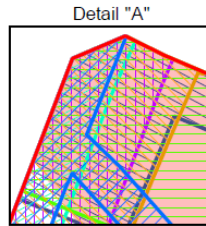
Legend

-  PARCEL NO. 1
-  PARCEL NO. 2
-  09/30/1983 #200938
(Roadway & Public Utility)
-  06/23/1989 #208771
(Drainage - Not Plottable)
-  04/01/1991 #104422
(Sewage Transmission & Collection Facilities)
-  12/13/1991 #431418
(Mod. 05/05/2010)
-  #2010- 0206056 & #2010-0498561
(Public Road & Drainage)
-  09/07/1994 #346667
(Slope)
-  Parcel Map Bk187 Pg21
(Transportation)
-  06/28/1999 #288226
(Avigation - Not Plotted - Blanket)
-  06/30/2004 #2004-0509007
(Landscaping)
-  10/18/2010 #2010-0498561
(Public Utilities, Public Service Facilities & Drainage)



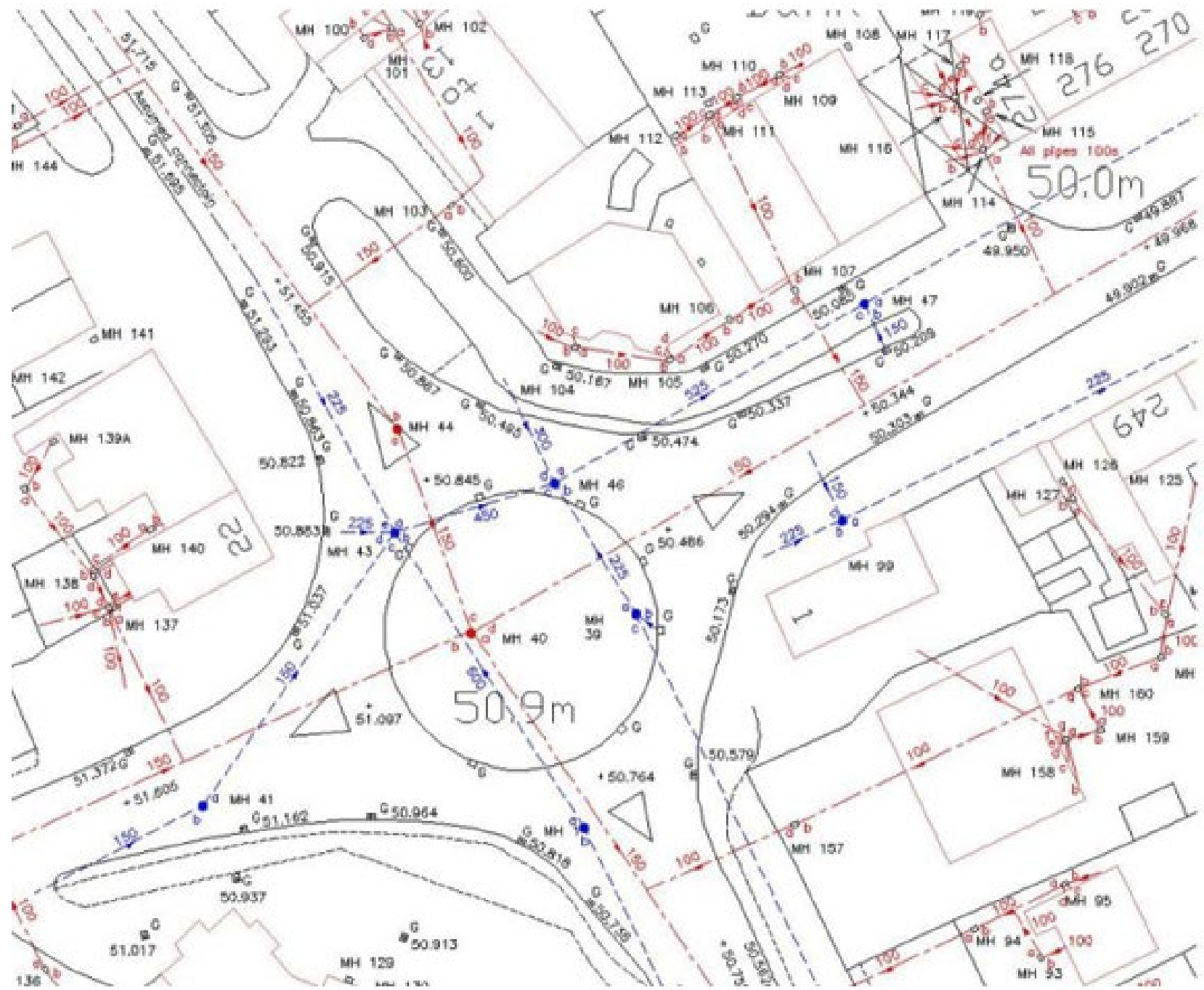
NOT TO SCALE

This map may or may not be an accurate description or identification of the land and is not intended nor may it be relied upon as a survey of the land depicted hereon. This map is solely intended to provide orientation as to the general location of the parcel or parcels depicted herein. First American Title Company, its subsidiaries and affiliates, expressly disclaim any and all liability for all loss or damage which may result from reliance or use of this map.













GIS Awareness?

- Search engines are not always the best at revealing **EVERYTHING**
- Applies to any kind of research
 - Incomplete information
 - Wrong data
 - Incorrect authority
 - Info is out of date
 - Unaware of existence



Primary "GIS" Interface





Flatten the GIS Learning Curve

- How do we make GIS more inviting, less intimidating?
- How do we share data better?
- Make it more usable?
- **Simplifying complex things is never easy but GIS professionals need to act as translators**



Maps Can Be INITIMIDATING

- GIS people look at different kinds of maps all day...not everyone does
 - Some may only look at certain types of maps...survey plats, parcel maps, zoning maps, hydrology, etc.
- Soften the blow, make the map relatable
 - Map or interface needs to be as simple as possible
 - Too complex, too busy...they are gone



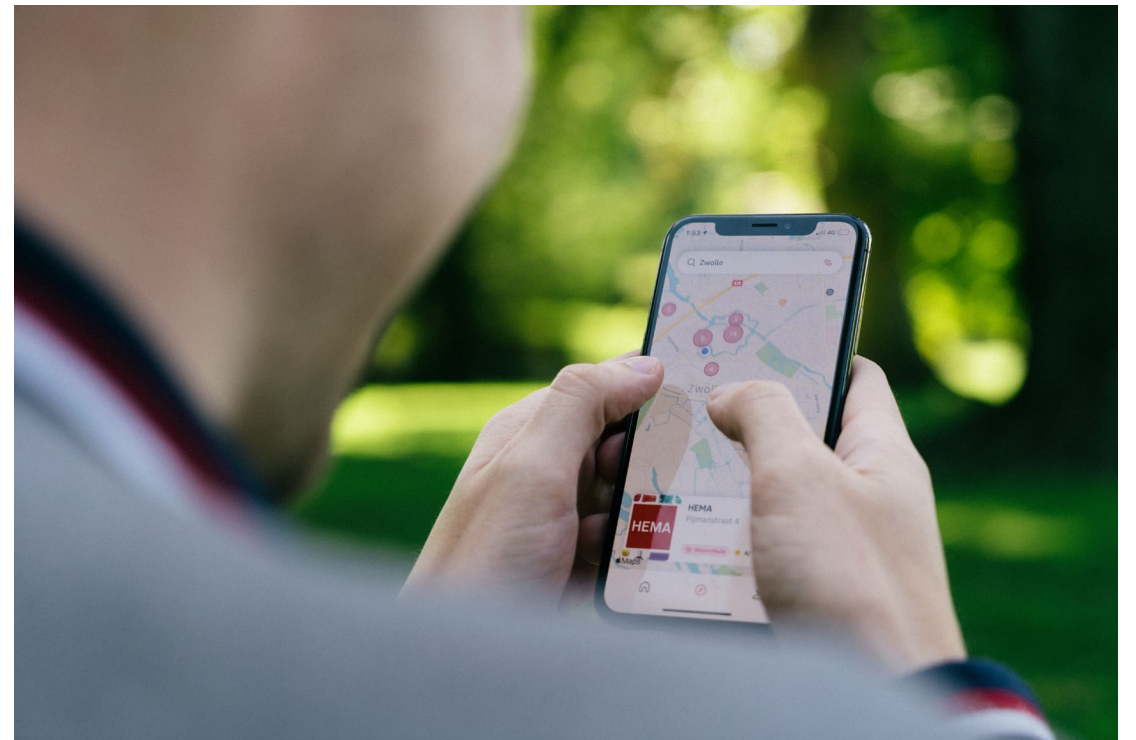
Maps Can Be INTIMIDATING





Maps Can Be INITIMIDATING

- Mobile compliance is **HUGE**
 - Can you read or interact with a map on a mobile device effectively?
- “Digital division” is real!
 - Desktop only?
 - Mobile only?
 - PAPER only?





Maps are INITIMIDATING

Interactive Property Assessment Planning Department Website

Use dropdown to search

(1 of 2)

Information for parcel: 165-06-109

Parcel Number: 16506109
Site Address: 413 S PASTORIA AV
SUNNYVALE CA 94086-7567

Acres (Assessor): 0.1
Sq. Footage (Assessor): 6,534
Tax Rate Area: 09002
Year Built: 1957
Document Number: 20773069

Print a [PROPERTY PROFILE](#) report.

[View Parcel Map](#)

Look up [Assessor's Information](#).

Related tables:

Tax Rate Areas [Zoom to](#)

0 100 200ft -122.042 37.374 Degrees

Powered by esri

Community Maps Contributors, City of San Jose, County of Santa Clara, California State Parks, © OpenStreet...



Maps Can Be INTIMIDATING

Interactive Property Assessment Planning Department Website

Use dropdown to search

Boundaries and Jurisdictions

- Supervisor Districts 2021
- San Martin Planning Area
- San Martin Commercial Use Permit Area
- San Martin Industrial Use Permit Area
- City Annexations
- City Limits
- Unincorporated Areas
- Spheres of Influence
- Urban Growth Boundaries
- Milpitas Urban Growth Boundary
- Coyote Valley climate overlay
- Coyote Valley
- Elevation Contours
- Zip Codes
- Urban Service Areas

© 2018 Community Maps Contributors, City of San Jose, County of San



Maps Can Be INTIMIDATING

Geologic Hazard Zones Planning Department Website

Layer List

Layers

- Parcels (Viewable at 0.4 miles)
- Parcels for air photos (Viewable at 0.4 miles)
- Geologic Lineaments (USGS OF 94-187)
- County Fault Rupture Hazard Zones
- County Landslide Hazard Zones
- County Compressible Soils Hazard Zones
- County Dike Failure Flooding Hazard Zones
- County Liquefaction Hazard Zones
- State Earthquake Fault Zones
- State Seismic Hazard Zones
- Cities
- County Boundary (line)
- County aerials 2022 (Nov 22, 2021-Mar 11, 2022)
- County aerials 2021 (Dec 2020-Mar 2021)
- SCL Lightning fire aerials (Sept 24-26, 2020)

NASA, NGA, USGS, FEMA | Esri Community Maps Contributors



Maps Can Be INTIMIDATING

Cities and Special Districts Planning Department Website

Address or APN

Fire Protection Districts Information

Los Altos Hills County Fire District

[Click for Special District Profiles](#)

[Zoom to](#)

Layer List

- Supervisor Districts 2021
- City Limits
- City Urban Service Areas
- City Spheres of Influence (SOI)
- Cemetery District
- Cemetery District SOI
- Community Service Districts
- Community Service Districts SOI
- Fire Protection Districts
- Fire Protection Districts SOI
- Healthcare District
- Healthcare District SOI
- Lighting Service Area
- Memorial District
- Memorial District SOI
- Open Space Districts

County of Santa Clara, California State Parks, Esri, HERE, Garmin, Sa



Maps Can Be INTIMIDATING



🔍 [Sign In](#)



Cook Central

Data

Applications

Cook Central

Centralizing Maps, Apps, and Data

🔍 Search Spatial Data

Explore Data by Category

[Browse All Data](#)



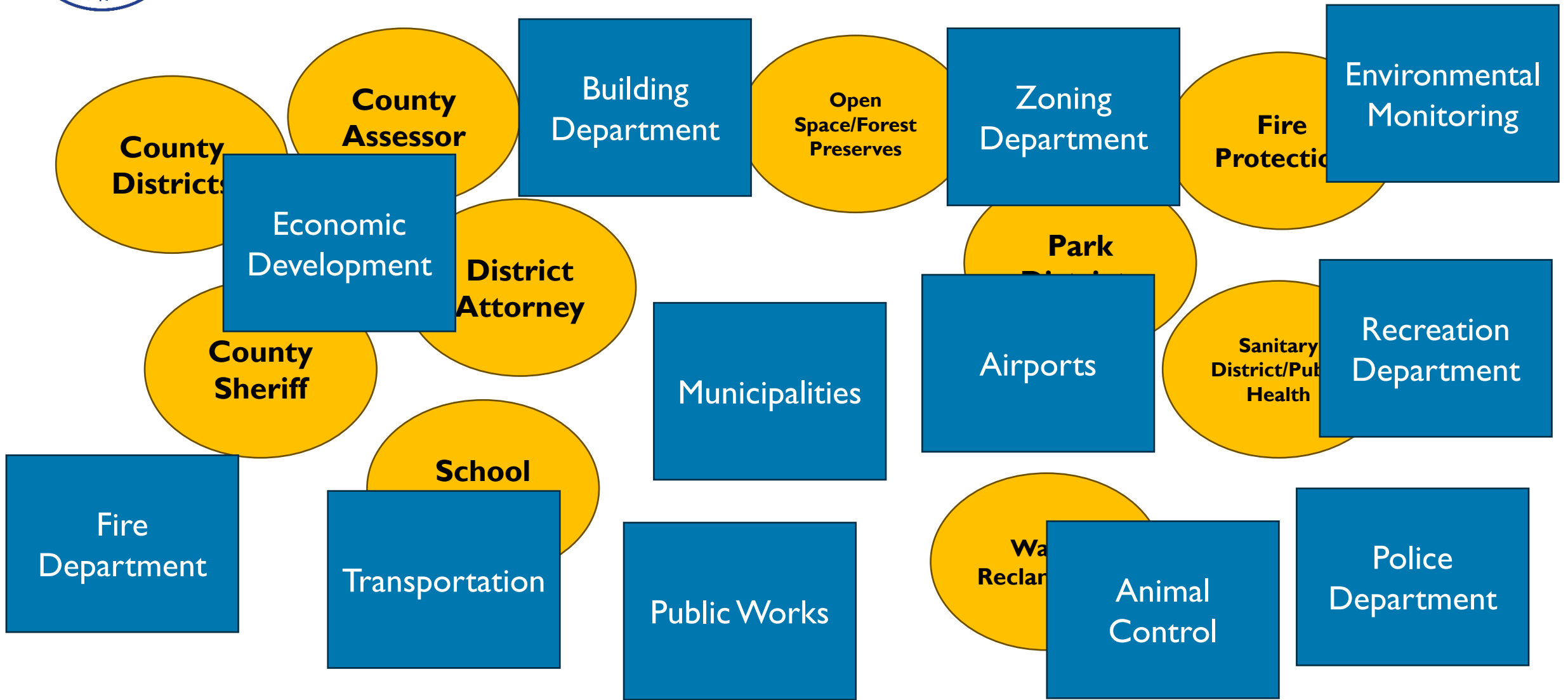


Centralization vs. Decentralization

- Who is ultimately responsible for which GIS output
 - Who creates/maintains?
 - Who responds to questions?
- Centralization easy since everything reports up
 - Things can sometimes fall through the cracks
- Decentralization can be effective IF there is good communication
 - Common or shared interests to achieve a goal or to maintain/streamline a service



Who Is in Charge of the Maps?





Establishing Communication

- GIS needs internal AND external communication
 - Same strategy needed in some cases
- Education and background of users
 - What sort of maps are they accustomed to?
 - How long may training/orientation take?
 - Full GIS training necessary?



Establishing Internal Communication

- **Be open with goals and results**
 - Why should others care?
- **Return on investment**
 - Even if the investment is 5 minutes of a person's time
 - Does it help them?
 - Does it make their job easier/better?
- **Show the BIG picture...but also the small one**



Establishing External Communication

- Spreading word to general public can be a challenge
 - Need allies
 - Who has the reach?
- Associations? Elected offices? Non-profit organizations?



Establishing External Communication

- Keep it local, make it important to THEM
- Return on investment
 - Even if the investment is 5 minutes of a person's time
 - Does it help them?
 - Does it make their job easier/better?
- Show the BIG picture...but also the small one



QUESTIONS?



Cook County GIS Contact Info

- Todd Schuble, GIS Director

- Cook County Illinois

- Cook Central

- Data and Application portal

- <https://hub-cookcountyil.opendata.arcgis.com>

- Email: gis@cookcountyil.gov



Questions	Answers
I would love to hear your insights at sources that explicate alternative methods to map 2+ variables (j.e., racial composition and usage of a particular County service) on a single map	Three variables or more will become more difficult to display in single map. You can use many cartographic techniques to be creative.
What is the increase in usage that you have seen over the past decade? Past two decades?	Pilot study was done by our vendor as a case study a couple years ago. Now we are putting up for a bid to cover entire unincorporated County.

Q & A