

# Welcome to GIS Day 2022!

Taking Santa Clara County into the future with GIS technology

November 2, 2022

# Flex Your Data



Steve Hong

Senior GIS Analyst

TSS – County of Santa Clara

Icon made by [Darius Dan](https://www.flaticon.com) from [www.flaticon.com](https://www.flaticon.com)

# Your Reaction...

after viewing vendor app demo.



Carving made by [Makiko Hong](#)

# Your Reaction...

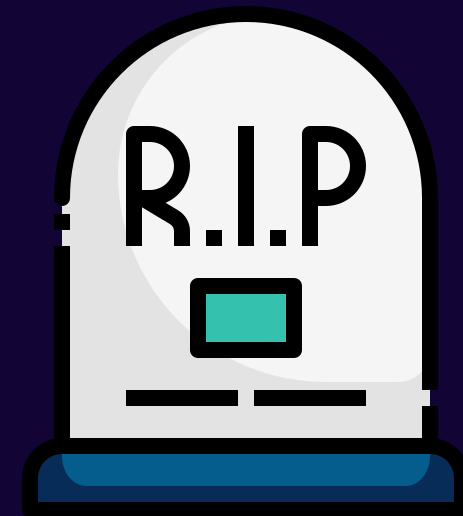
after plugging in your actual data.



Carving made by [Steven Hong](#)

# Graveyard of Apps – Updating Data

- Too many data sources with unique schemas
- Too many apps requiring unique schemas
- Result: Too out-of-date to trust the app

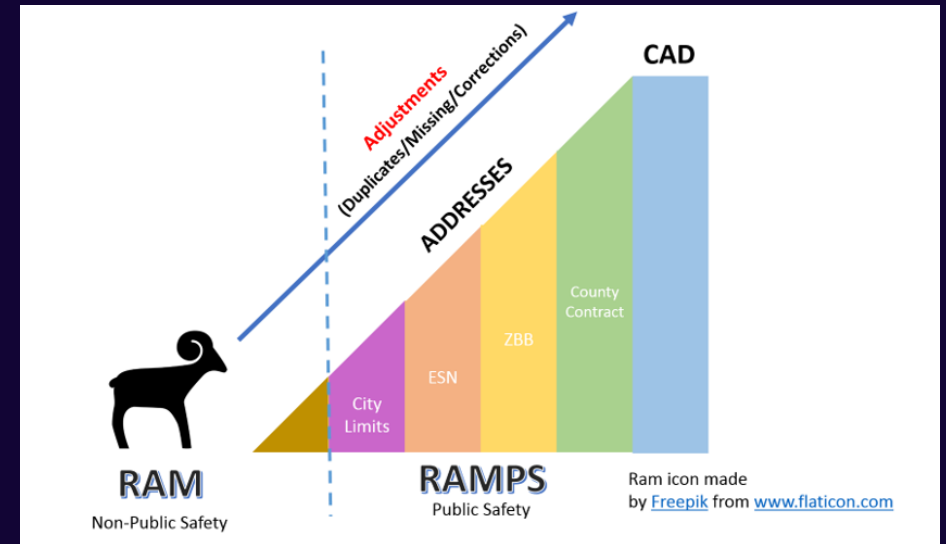


# RAMPS (Regional Address Map for Public Safety)

- Started 2017
- Over 750,000 Address Points
- Participation by 17 different city entities:

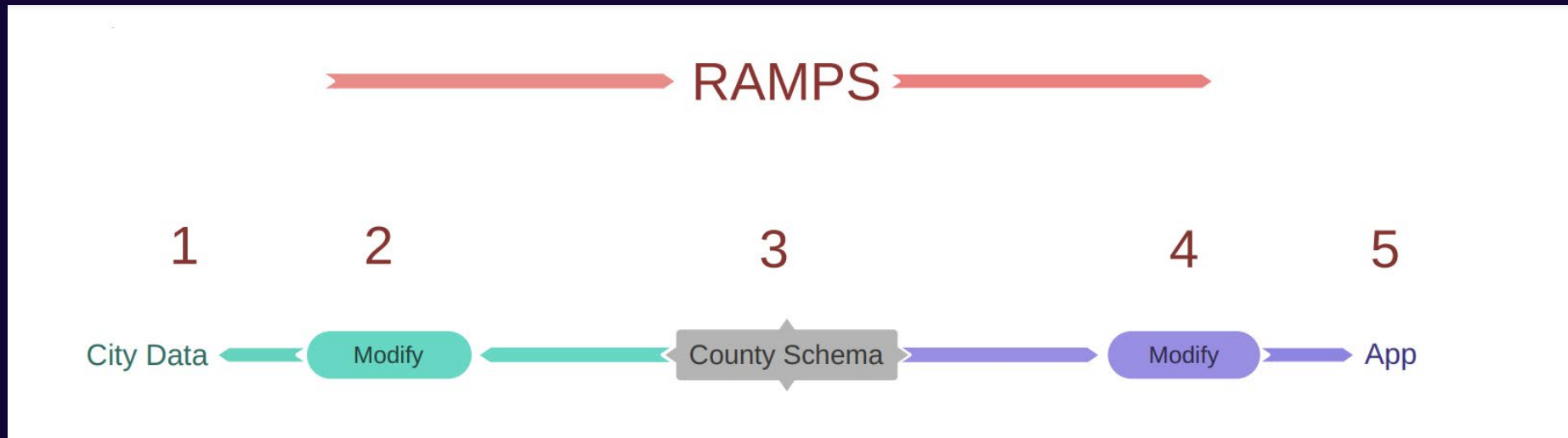
Cupertino  
Palo Alto  
Los Altos  
Stanford  
Los Gatos  
Monte Sereno  
Campbell  
Gilroy  
Los Altos Hills

Saratoga  
Mountain View  
San Jose  
Santa Clara  
Milpitas  
Sunnyvale  
Morgan Hill  
Santa Clara County (Unincorporated)



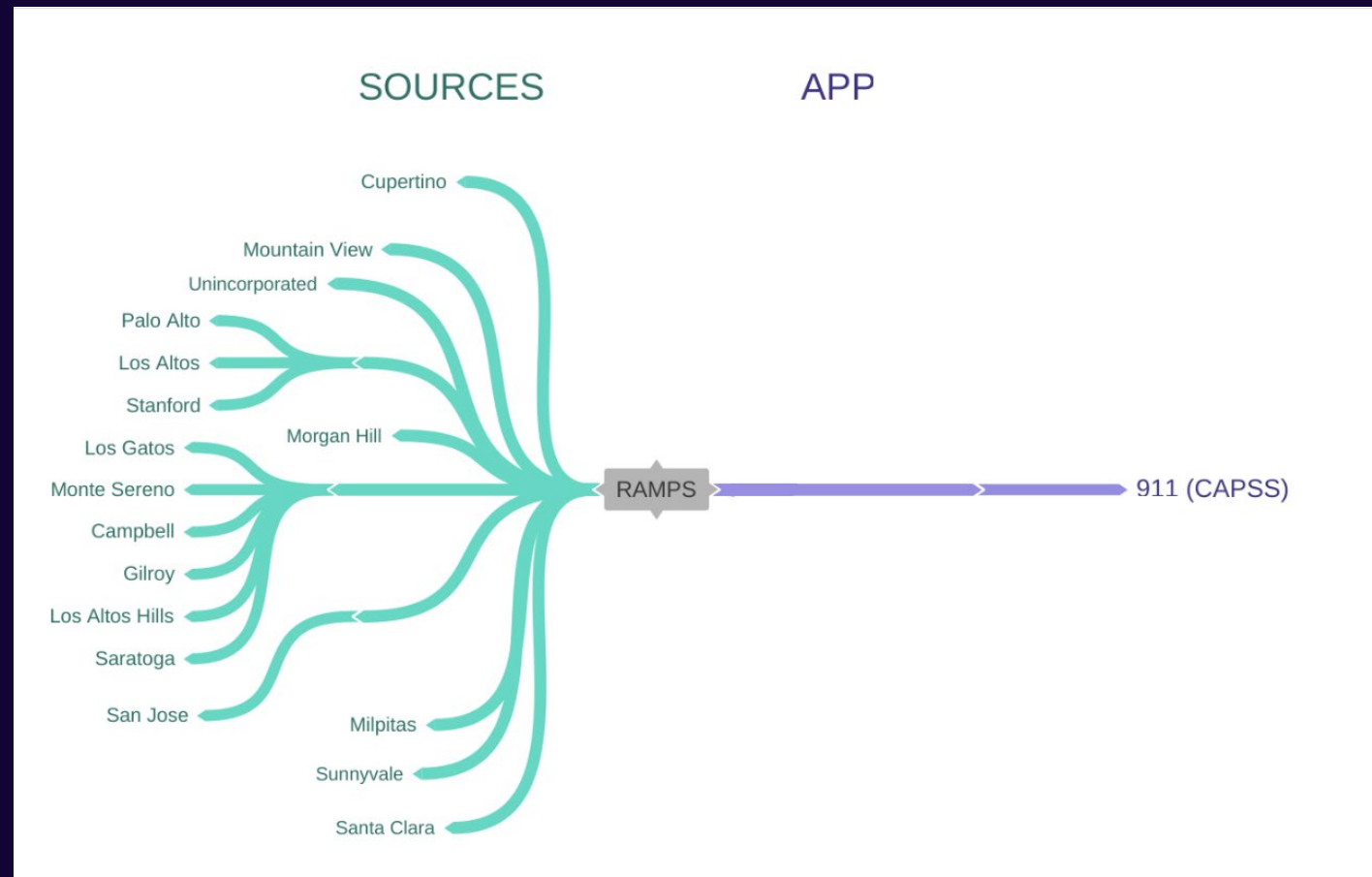
# RAMPS Workflow (2017)

- Specifically for 911 app
- Homegrown schema
- Schema downside: field expansion/forgotten fields



# RAMPS (2017) - Single App

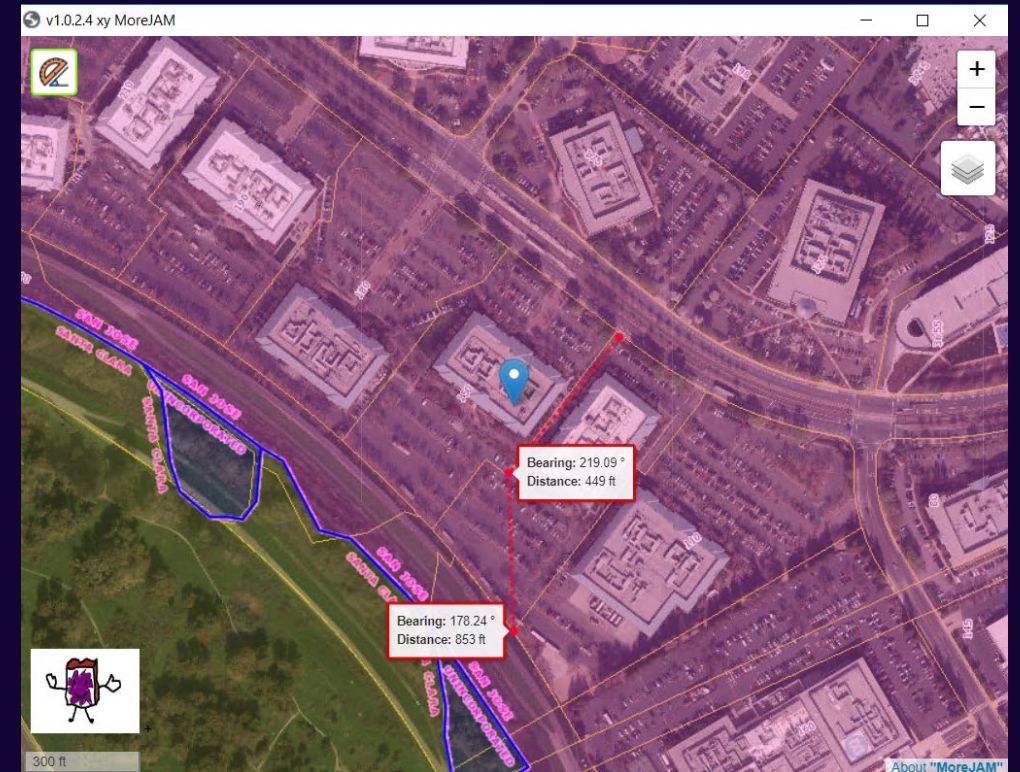
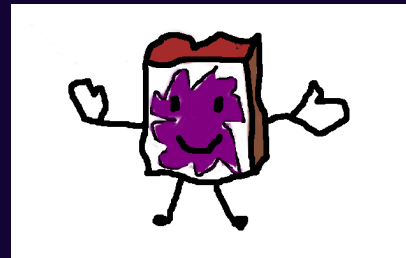
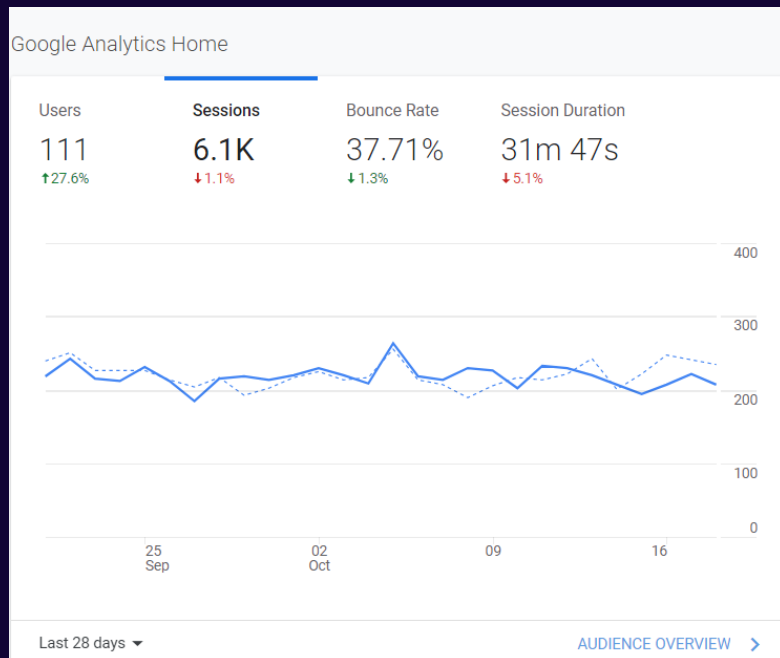
- Location Aggregator
- No disruptions to cities
- Most modifications upfront





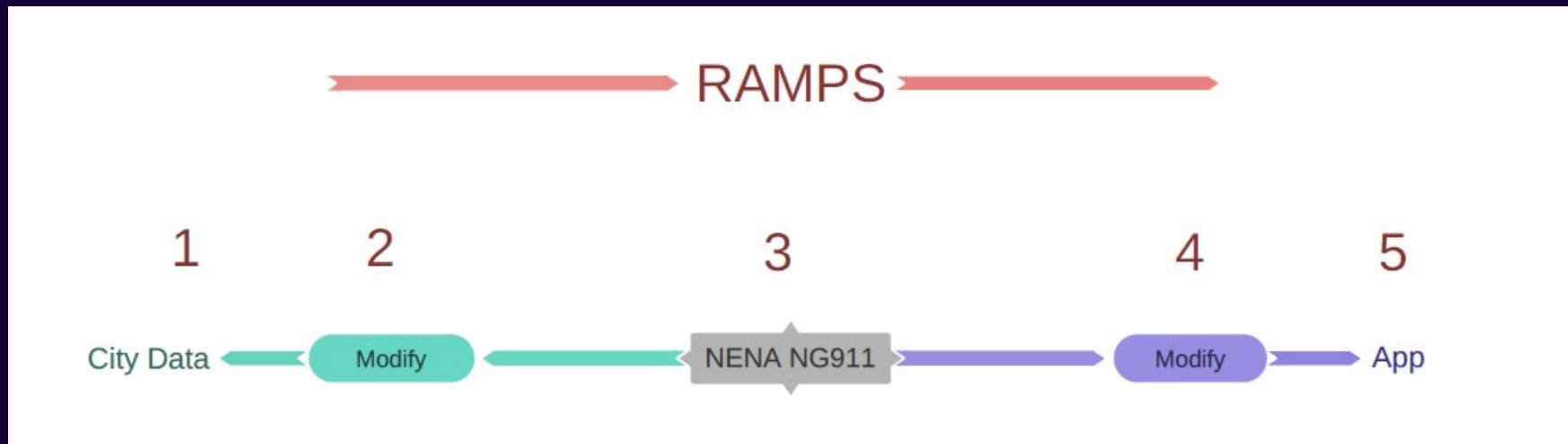
# MoreJAM App

- **More** than **Just A Map**
- Designed to be Fast and Reliable
- Over 200 hits per day, 24/7 365 days



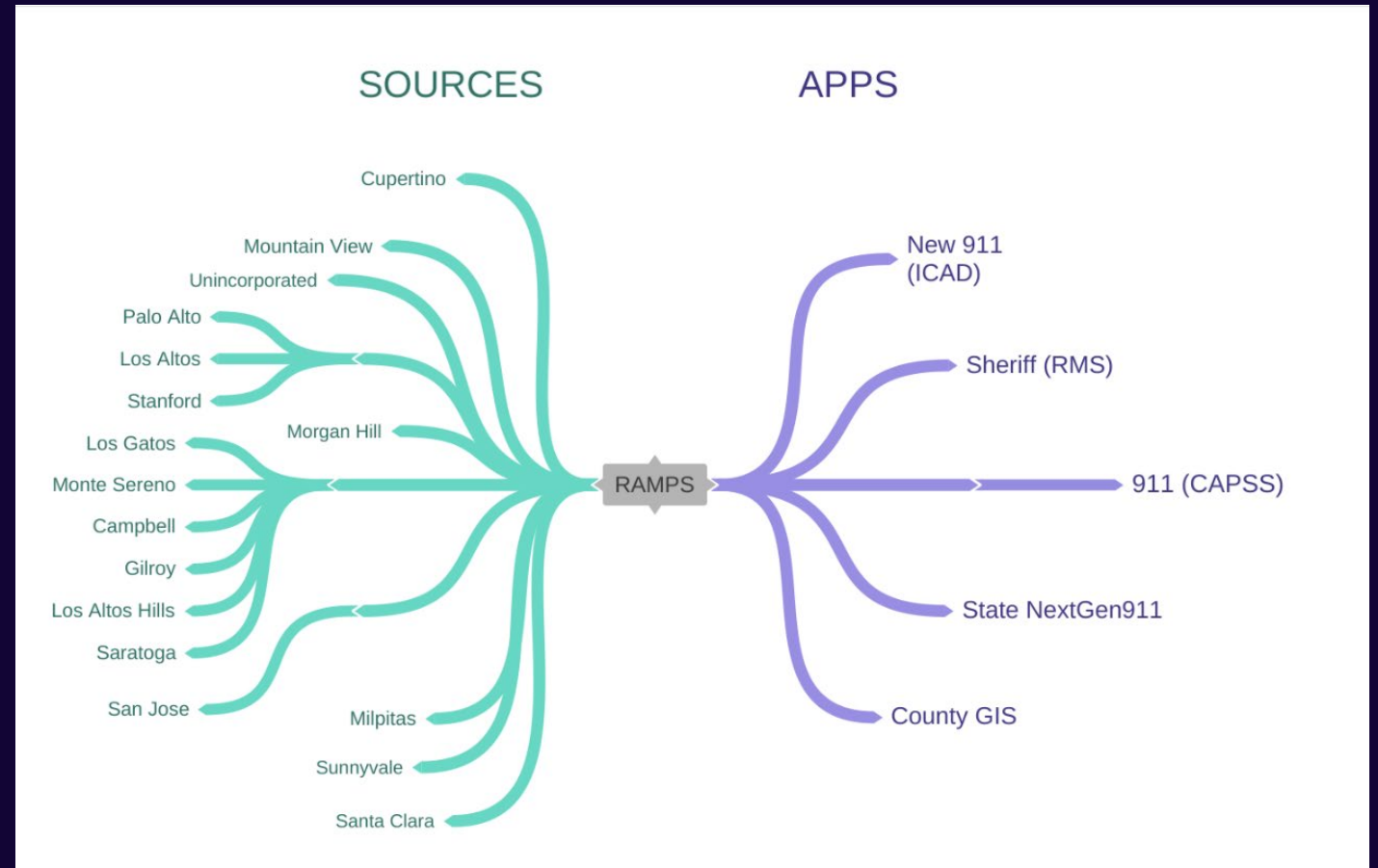
# RAMPS Workflow (2022)

- Geared for multiple apps
- NENA NG911 schema has many more fields
- Documentation (no more ghost fields)
- Attribute values all spelled out – no abbreviations



# RAMPS (2022) – Multiple Apps

- Location Controller
- No disruptions to app end users
- Modifications upfront and at the end
- Non-public safety (official address points for Santa Clara County!!!)





# **\*\*Warning\*\*** Live Demo

Demonstrate ability to use dataset for three different apps with three different schema requirements and to update them with new dataset via AGOL web services

**Scenario 1:** Different app requirements for 150 West Tasman Drive (SCC TSS HQ)

App 1: 150 W Tasman Dr

App 2: 150 West Tasman Drive, San Jose

App 3: 150 W Tasman Dr, SJ

**Scenario 2:** Update apps with more addresses

# Key Takeaways

- Data updates are SCARY but can be done.
- Use a comprehensive data schema
- Change mentality from Location Aggregator to Location Controller
- Real technological strength starts with data flexibility



**Thank you and stay flexible.**



Image from [www.flaticon.com](http://www.flaticon.com)

Questions	Answers
Now that you have buy-in from these 15 cities for 911 usage, can we leverage this data collection process to get more data from the 15?	That is the goal. We need to have an agreement with each city for the current dataset. Originally, we started this process for the purpose of 911. Now, we would like to have this agreement for the purpose of general County operation. Currently, we are working on the MOU with each city. Hopefully, that will lead to additional data exchange and cooperation.
Can public safety personnel add notes to the records for individual addresses? For example, medical needs of residents.	You could. This app uses GeoJson, so you can add the note to it. However, the dispatchers uses a CAD program, that CAD program has its own way to add those special notes, which is usually passed down to the public safety personnel (EMS, Fire, Sheriff, etc.).



## Q & A