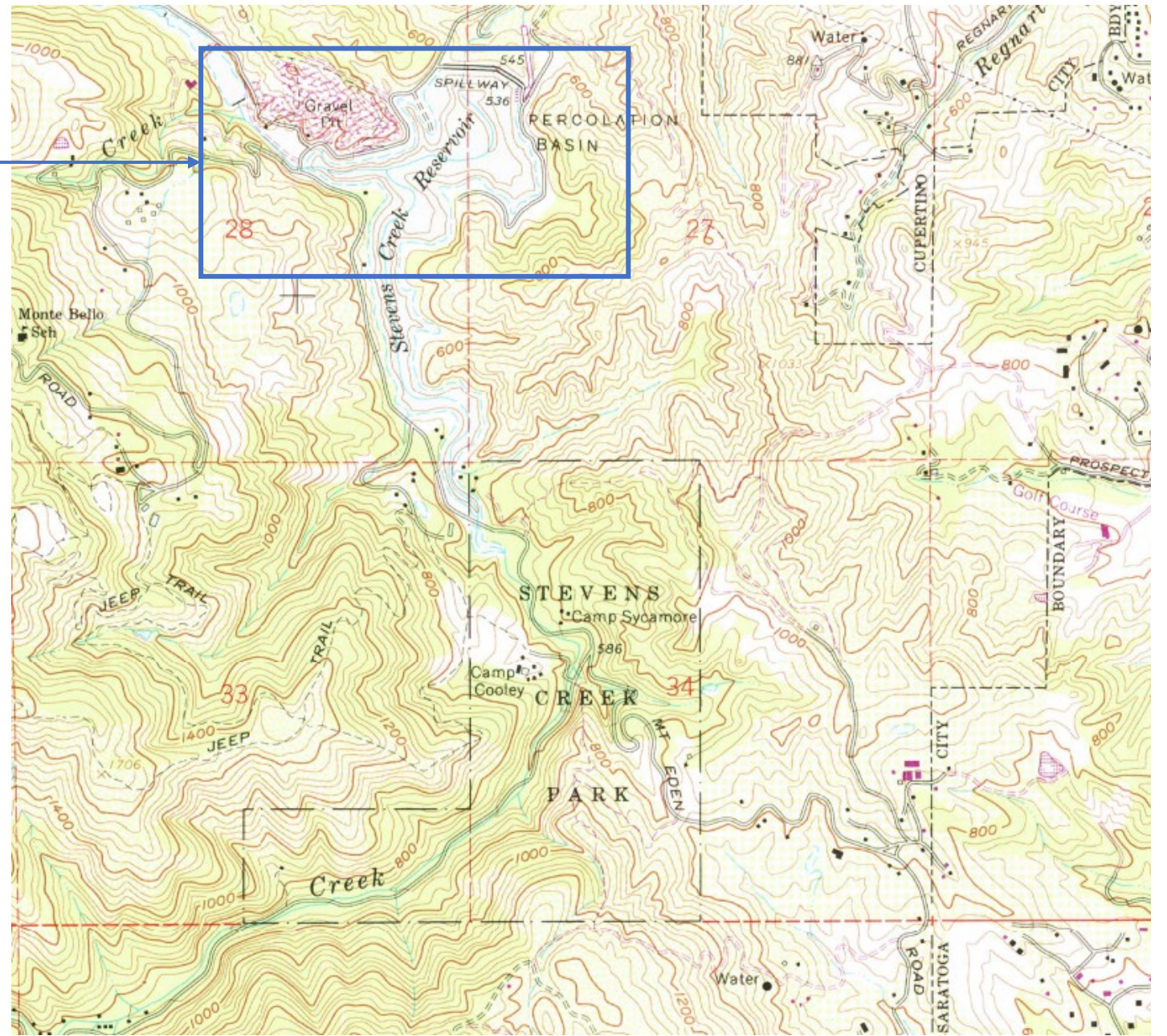




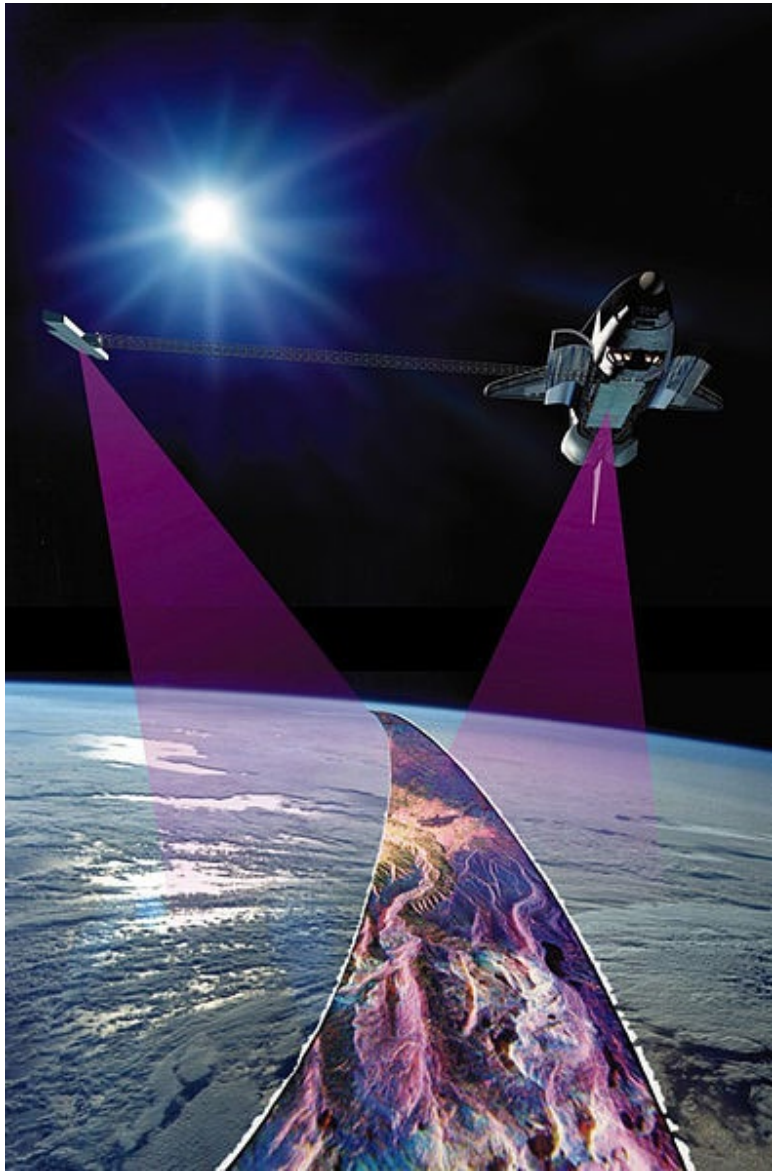
Parkland
Discoveries using
LiDAR

John Falkowski &
Seth Hiatt



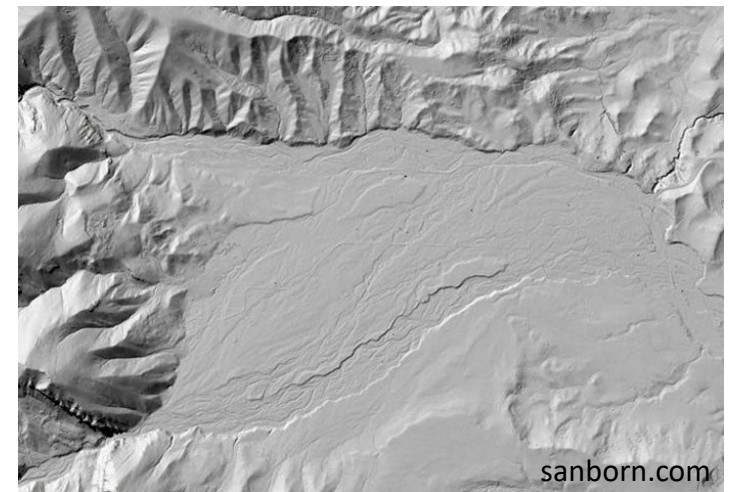
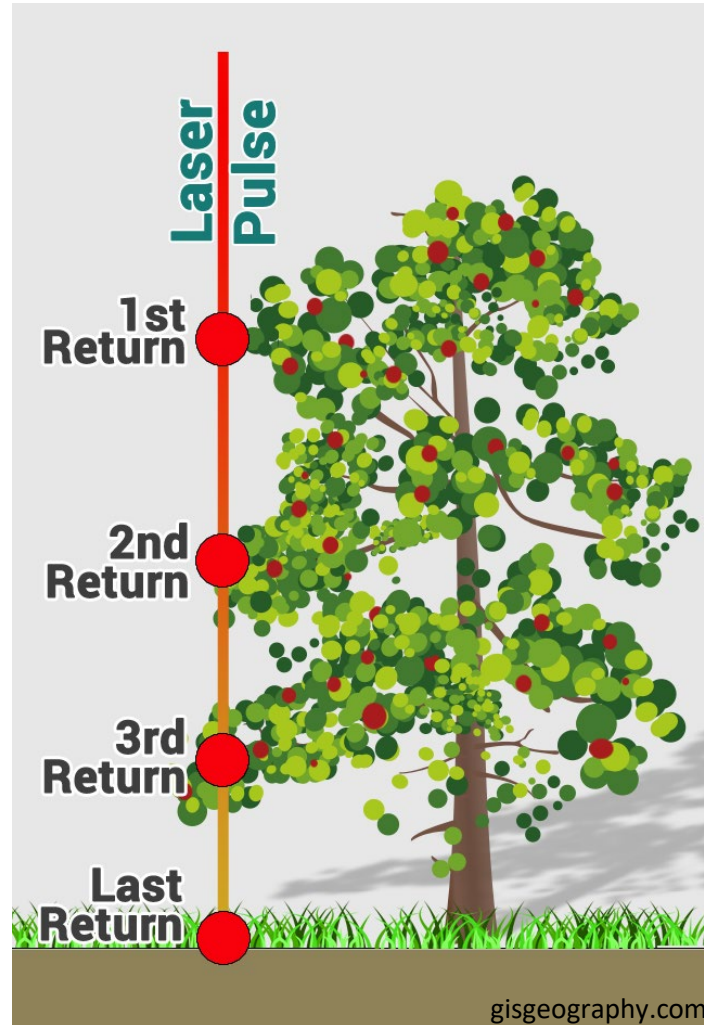


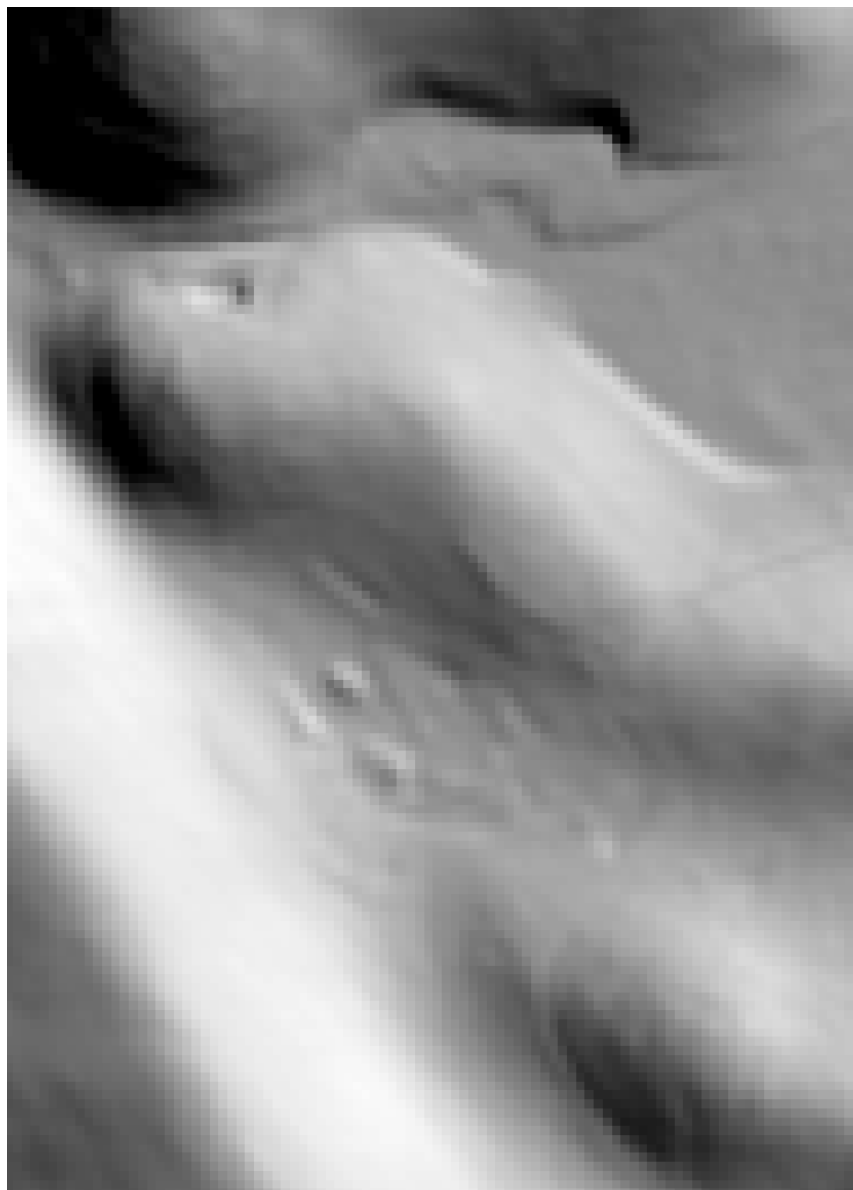
Field mapping still isn't easy! Remote sensing is nice way to avoid poison oak, thorns, ticks, & rattlesnakes

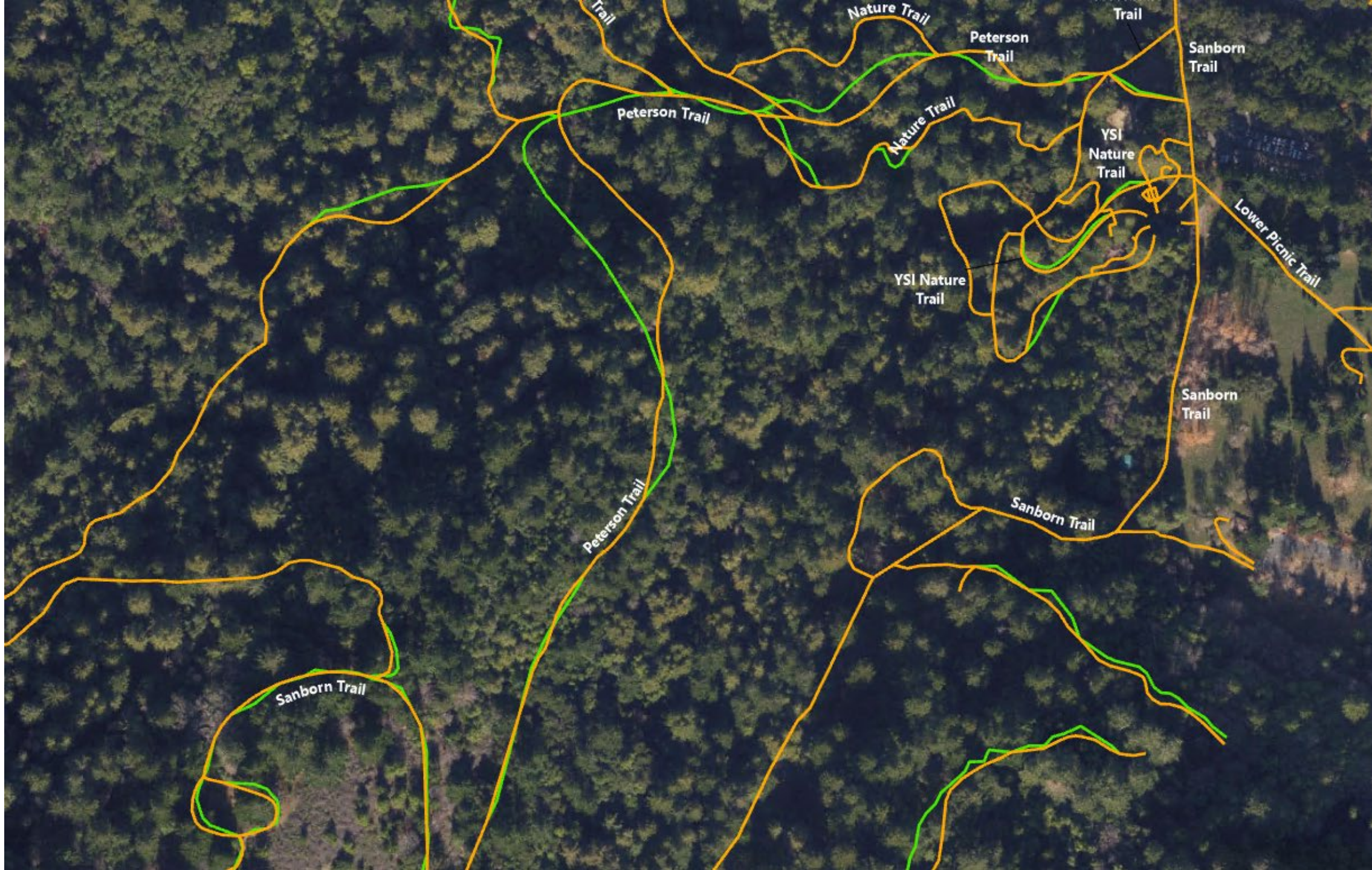


Shuttle Radar Topography Mission

What is Lidar?







Trail

Nature Trail

Peterson Trail

Trail

Sanborn Trail

Peterson Trail

Nature Trail

YSI Nature Trail

YSI Nature Trail

Lower Picnic Trail

Sanborn Trail

Peterson Trail

Sanborn Trail

Sanborn Trail





Stevens Creek County Park Villa Maria

NO. 52 SANTA CLARA COLLEGE, VILLA MARIA,
MOUNTAIN VINEYARDS, OCT. 7, 1911.

TUBBILL & MILLER, PHOTOGRAPHERS



NO. 78 SANTA CLARA COLLEGE, VILLA MARIA,
CALIFORNIA, OCT. 6, 1911.

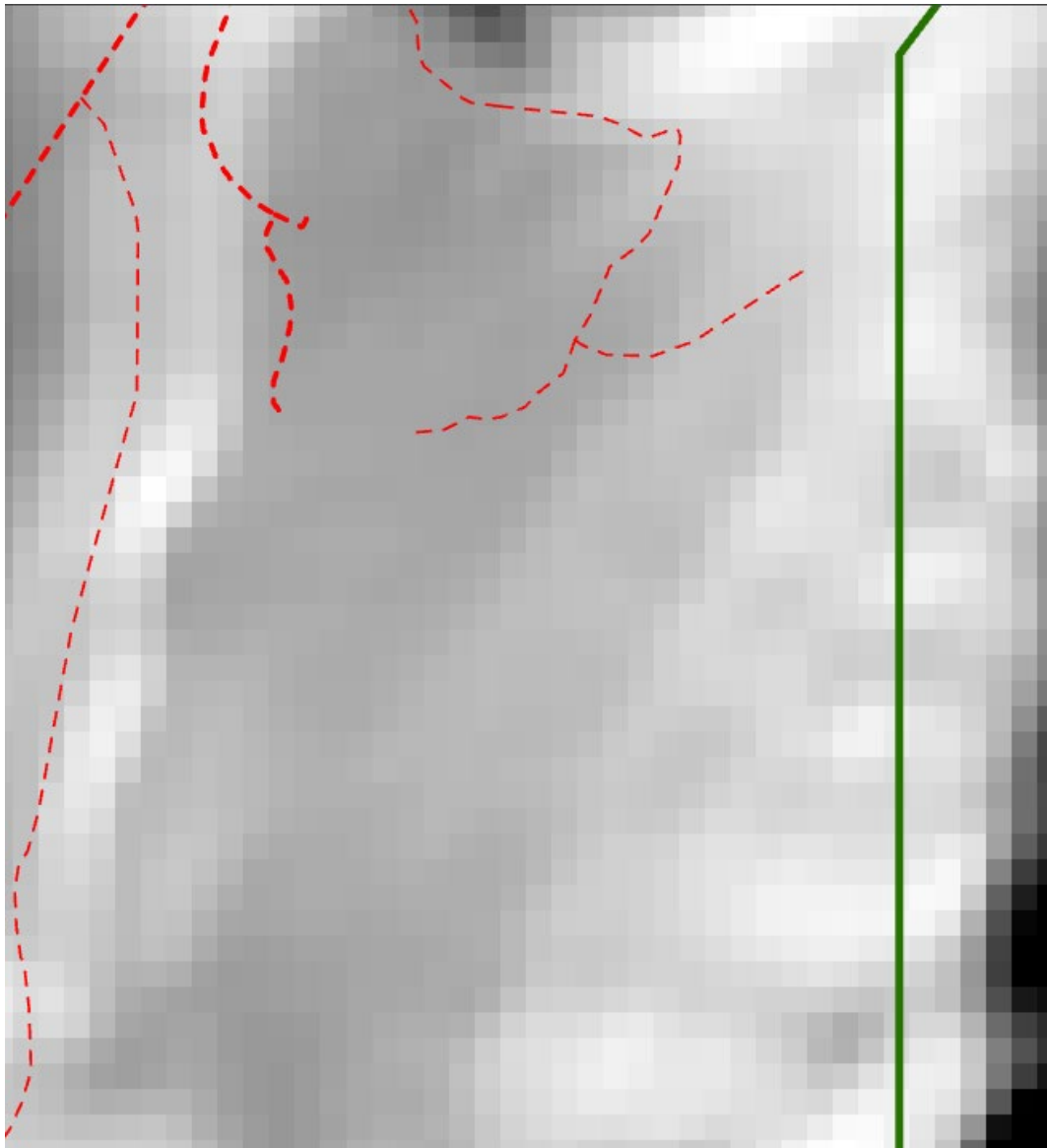
TURRILL & MILLER PHOTO.



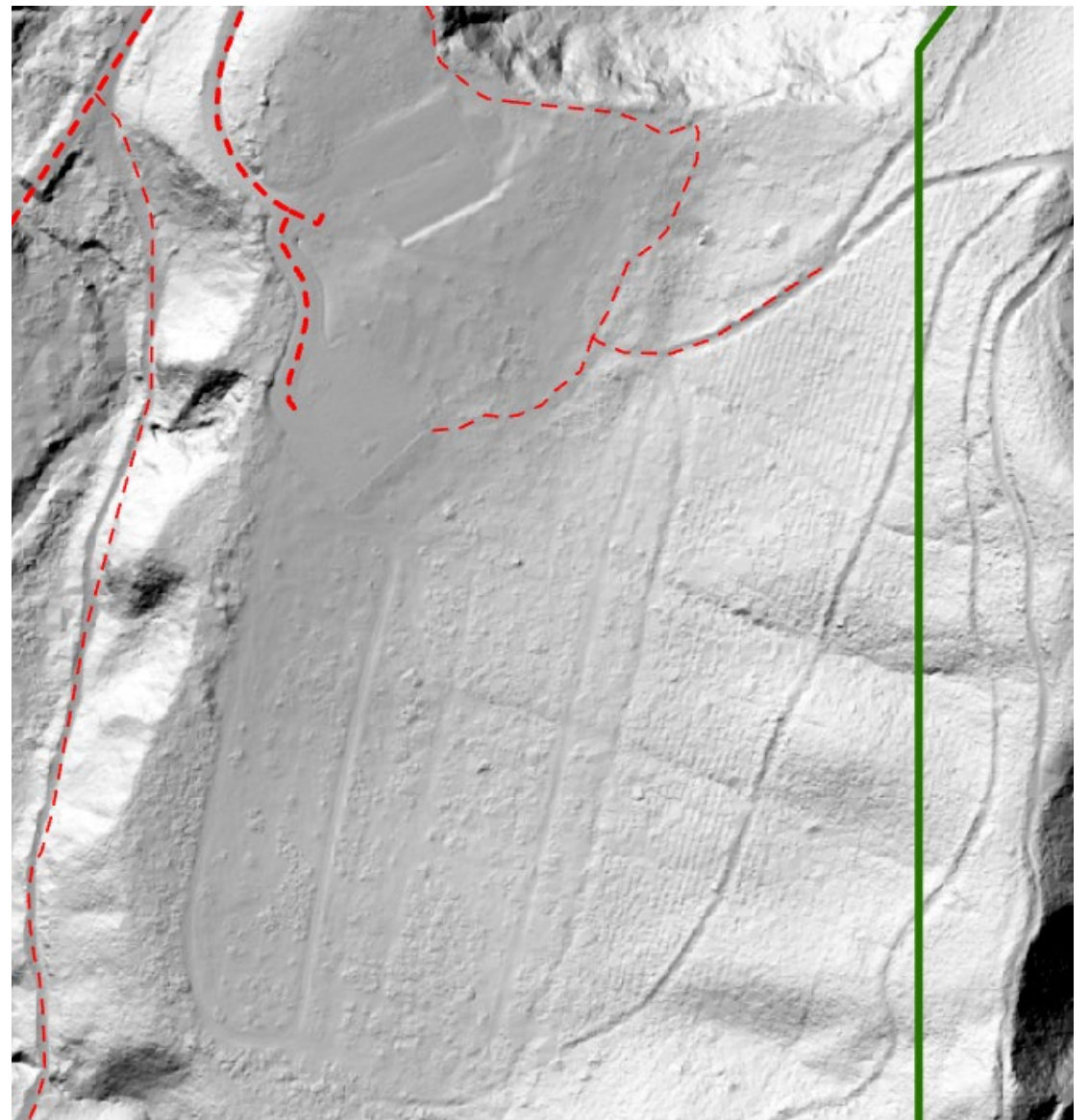
NO. 51. SANTA CLARA COLLEGE, VILLA MARIA,
MOUNTAIN VINEYARDS, OCT. 7, 1911.

TURRILL & MILLER PHOTO. S. P.

Patterns on the Landscape



10-meter DEM-derived
Hillshade



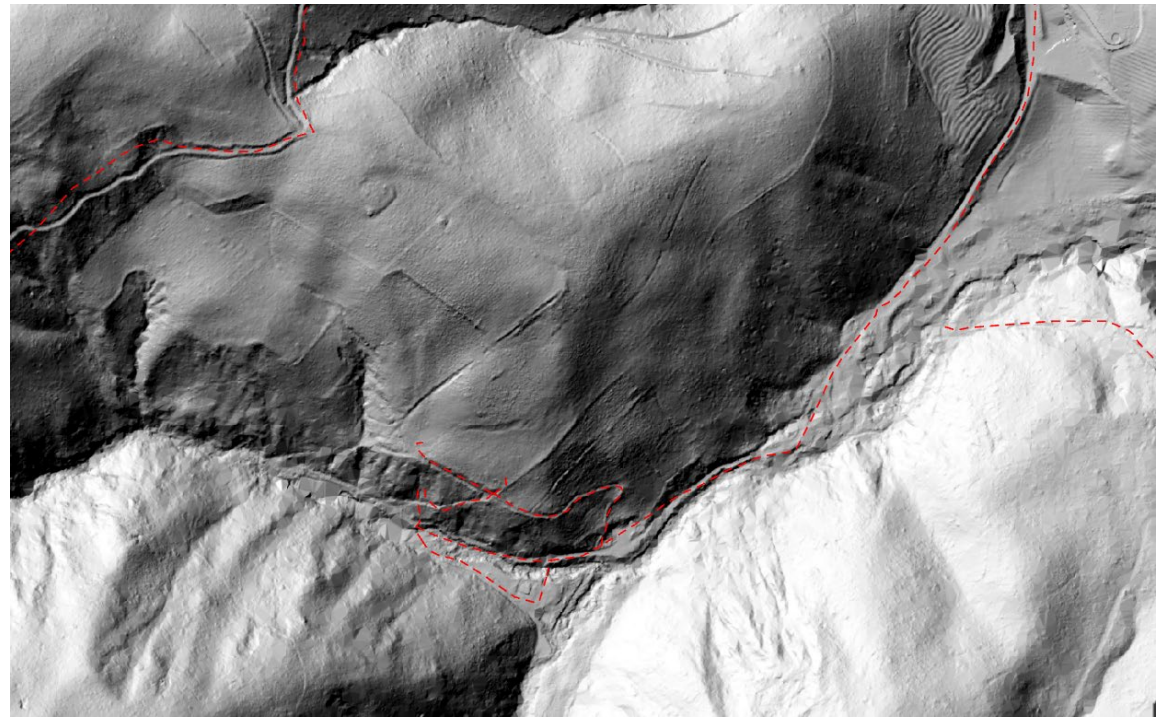
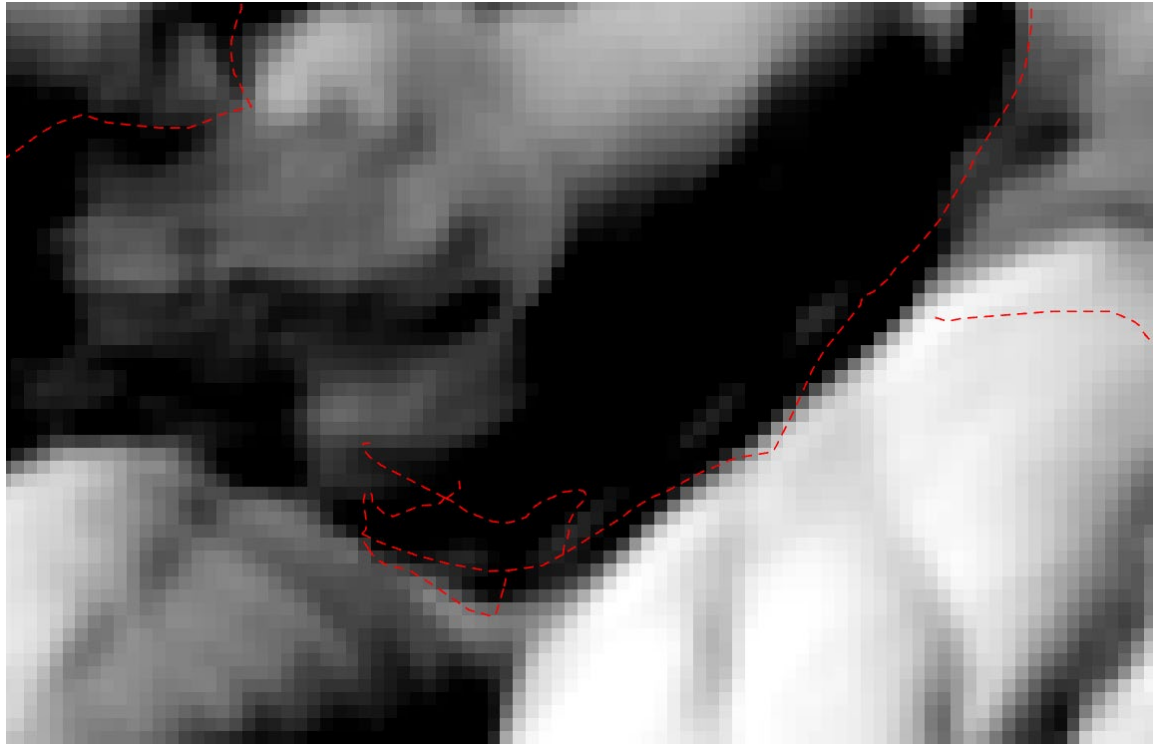
1-foot LiDAR-derived
Hillshade



Sanborn County Park

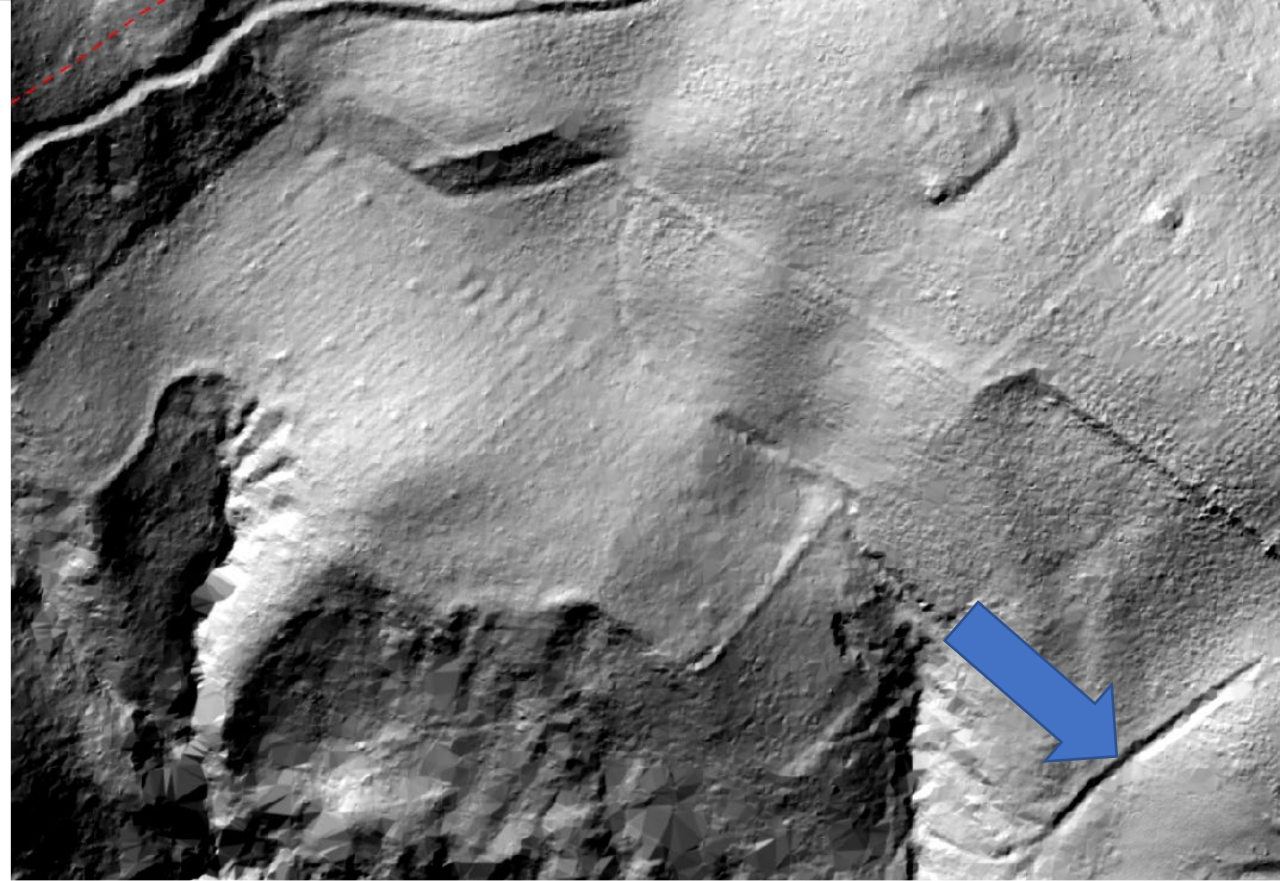
- History of Settlement in the 1860s and 1870s by French and Italian Immigrants
- Developed Orchards and Vineyards to support families
- Rock walls and other remnants are still on the land

Rock Walls, Vineyards, Landslides, oh my!



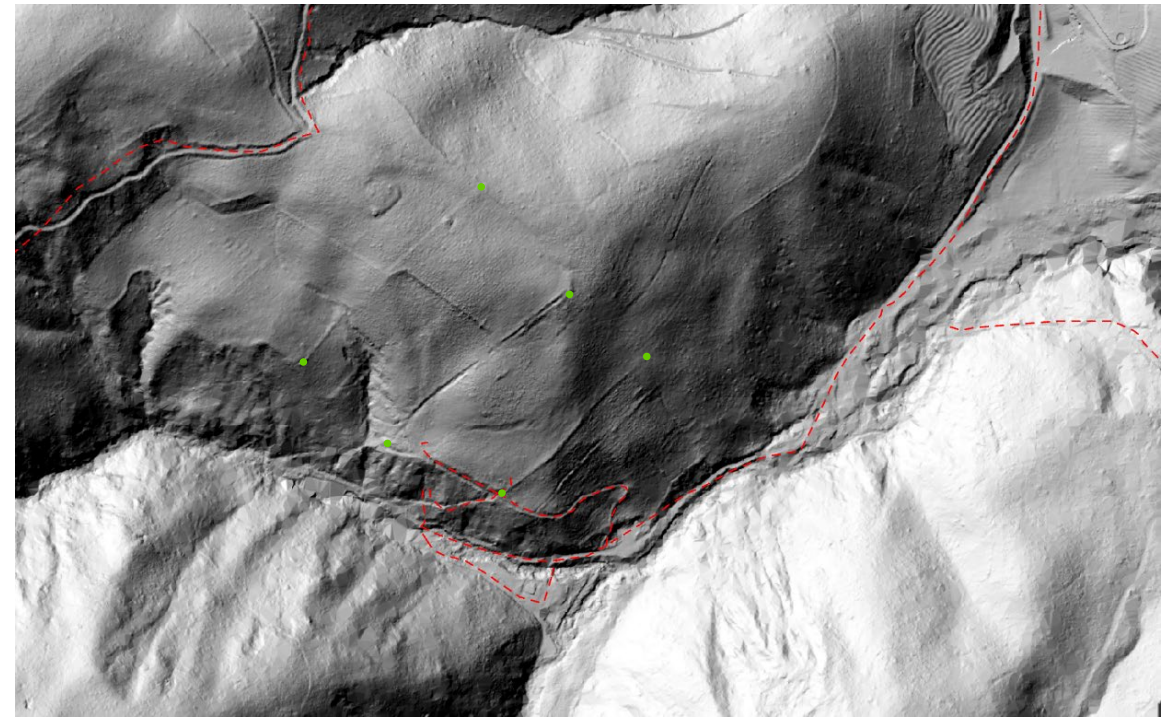
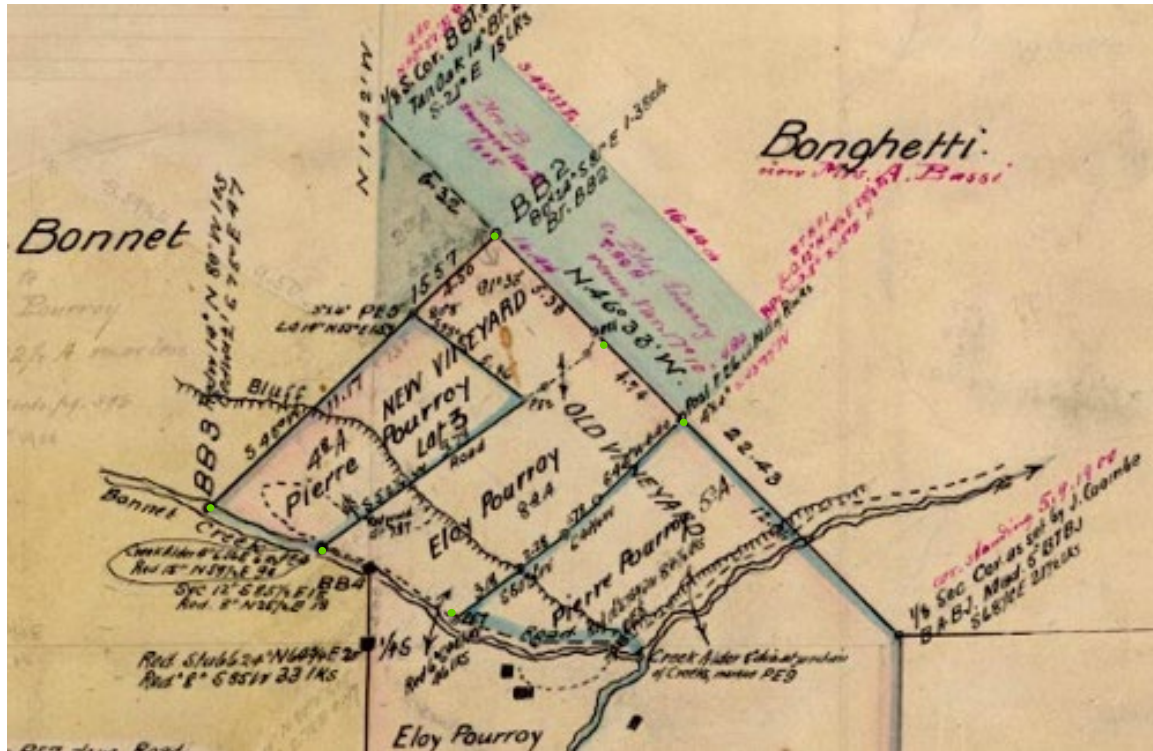
Remnant Vineyards and Walls



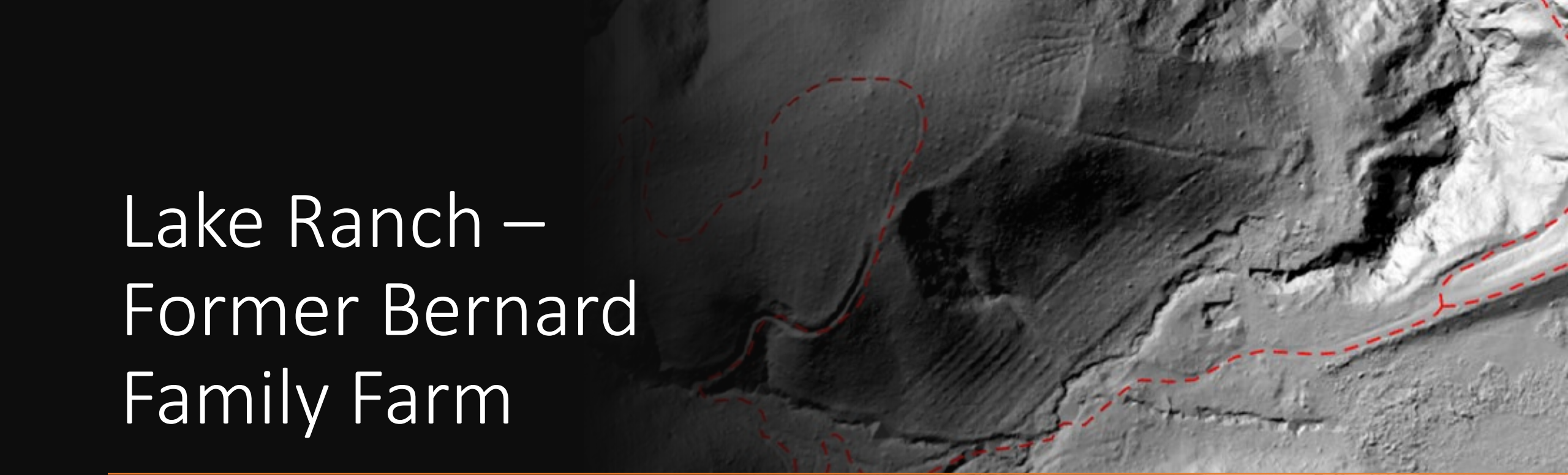


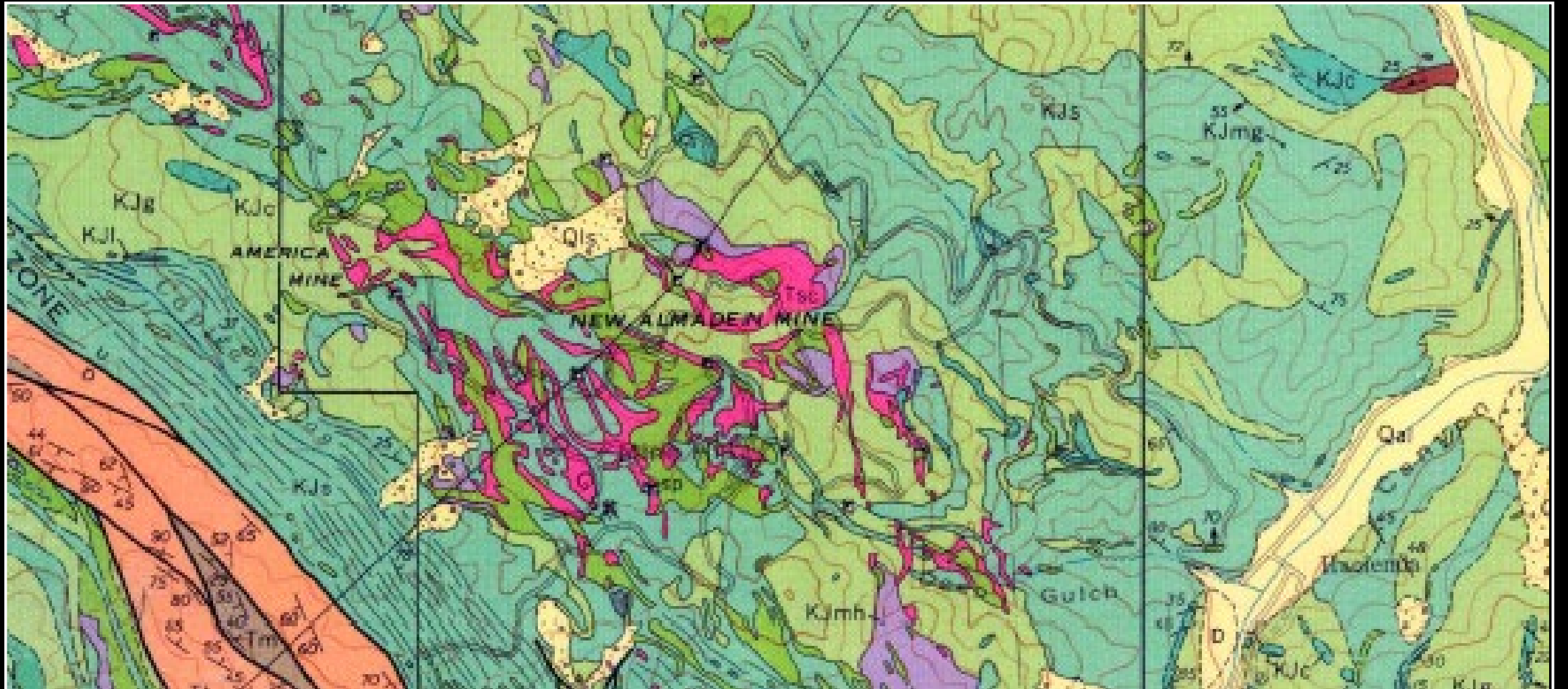
Old Rock Wall

Surveys and Boundaries!




Lake Ranch – Former Bernard Family Farm

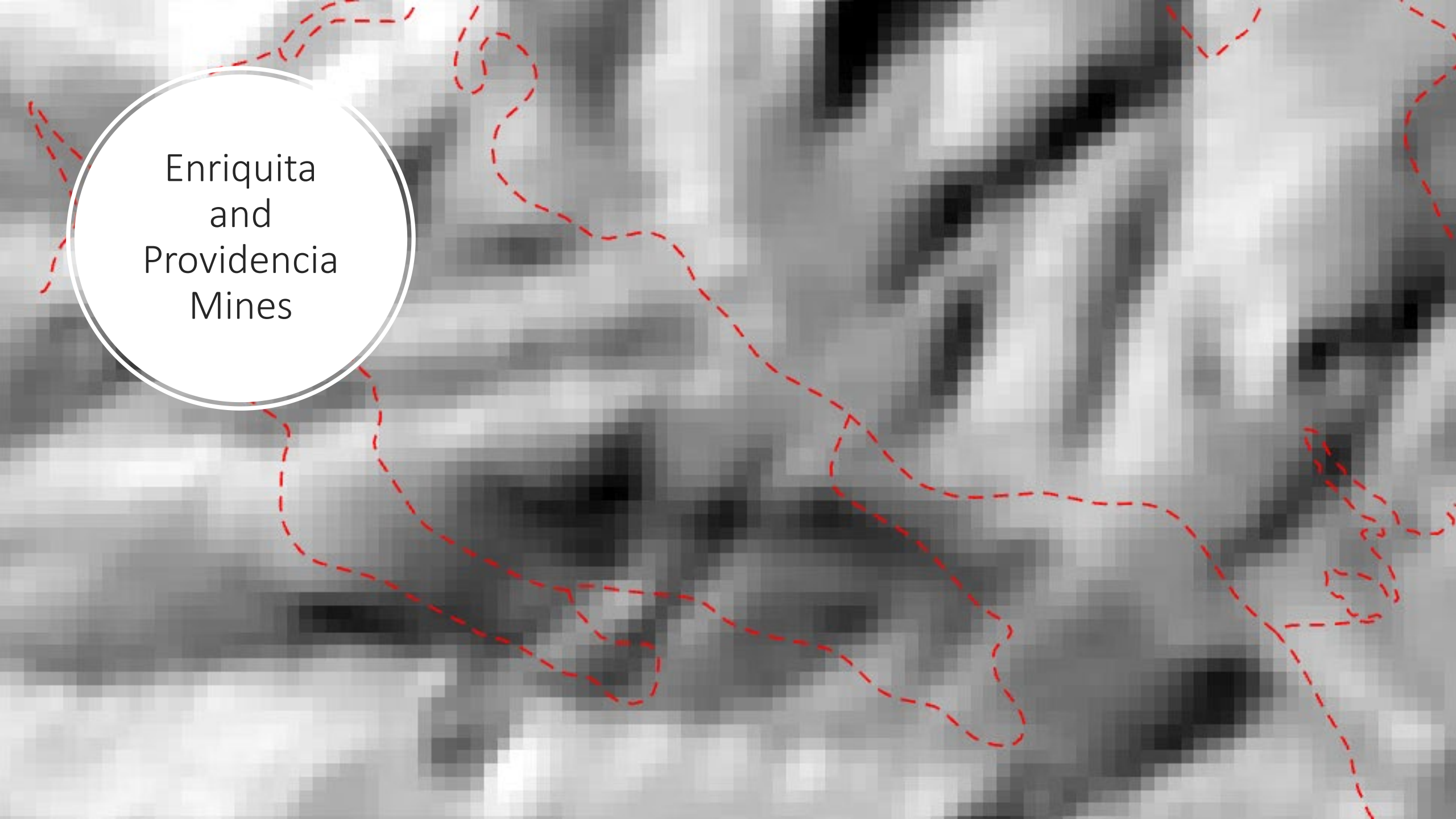


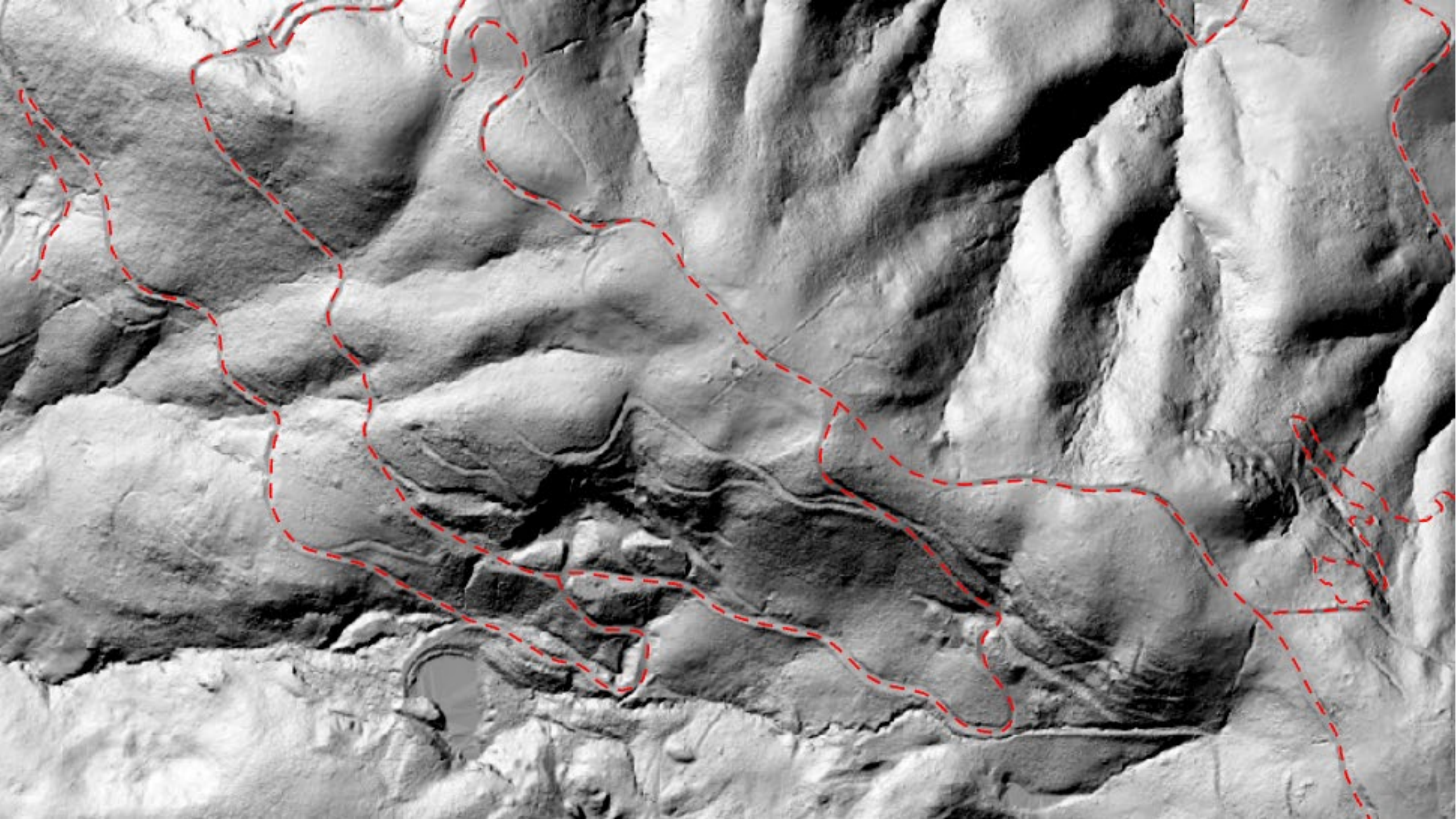


Almaden Quicksilver County Park - Former Mercury Mines



Enriquita
and
Providencia
Mines





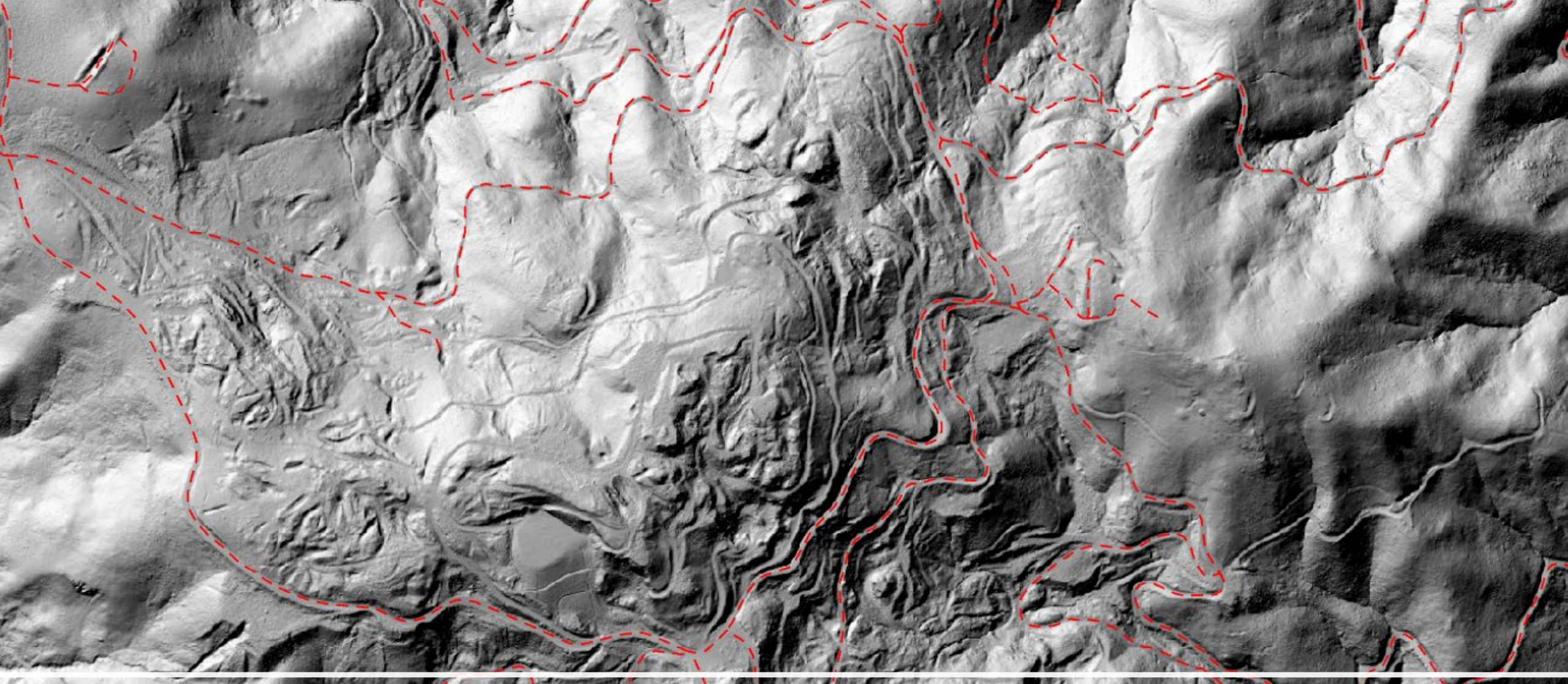


Mine Hill:
the extent of
historic
alteration is
hard to see on
the landscape
today

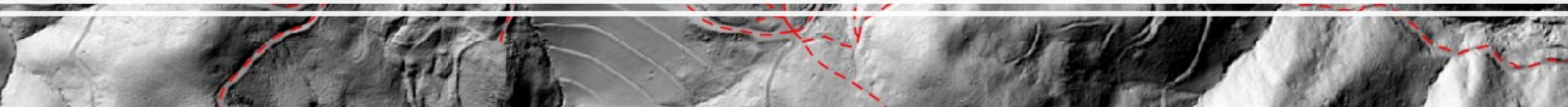


Mine Hill - Hints of historic mining activity in 2021 Imagery





Hints of historic mining activity in 2021 LiDAR



Questions	Answers
Sorry, I missed it, where does the LIDAR data come from? Free Lidar sources for govt?	The Lidar was acquired by the Sanborn Map Company contracted by Santa Clara County. The County TSS GIS Department processed the data for further use by county or partner agencies. LiDAR data is a public domain and contributed to the USGS 3DEP program where you can download our data

Q & A